



ANNUAL EXPENDITURE PLAN STATUS REPORT

Santa Clara Valley Open Space Authority
Fiscal Year 2022/2023



Report Design and Layout

Alisa D'Angelo
Staff Accountant

Justina Tien
Fiscal Services Officer

Report Development and Contribution

Andrea Mackenzie, General Manager
Matt Freeman, Assistant General Manager
Lea Rauscher, Assistant General Manager
Aaron Hébert, Natural Resources Manager
Marc Landgraf, External Affairs Manager
Derek Neumann, Field Operations Manager
Lucas Shellhammer, Planning Manager



ALEX KENNETT
Director, District 1

MIKE FLAUGHER,
Director, District 2

HELEN CHAPMAN
Vice Director, District 3

GARNETTA ANNABLE
Director, District 4

VICKI ALEXANDER
Chairperson, District 5

MIKE POTTER
Director, District 6

DR. KALVIN GILL
Chairperson, District 7

ANDREA MACKENZIE
General Manager

SCI CONSULTING GROUP
Parcel Tax Administrator



The Open Space Authority conserves the natural environment, supports agriculture and connects people to nature, by protecting open spaces, natural areas, and working farms and ranches for future generations.

Table of Contents

About the Parcel Taxes.....	3
Annual Expenditure Plan Status Report	3
FY 2021/2022 EPOC Oversight Report	3
Annual Budget and Work Plan Development for the Parcel Tax Funds.....	7
Financial Summary for Fiscal Year 2022/2023	8
Revenues	8
Expenditures	8
Parcel Tax Funded Programs and Projects	15
Expenditure Plan Categories	15
Status and Expenditures by Project	27
How to Read the Project Status Pages	29
EXPENDITURE PLAN CATEGORY #1	31
EXPENDITURE PLAN CATEGORY #2	45
EXPENDITURE PLAN CATEGORY #3	55
Grant Program Funded by Measure Q and Measure T	91
Urban Grant Program Guidelines.....	92
Grant Disbursements and Balances as of June 30, 2023.....	93
Expenditure Plan Oversight Committee Costs	97
Administrative Costs	98
Index of Projects Funded by Measure Q and Measure T in Fiscal Year 2022/2023	i
Authority Board of Directors’ Response to MQEOC Oversight Report Recommendations for Fiscal Year 2022/2023.....	iv
The Open Space, Wildlife Habitat, Clean Water and Increased Public Access Expenditure Plan	vii
2020 Expenditure Plan The Open Space, Wildlife Habitat, Clean Water and Increased Public Access Measure Expenditure Plan	xv

(for printing purposes – this page intentionally left blank)

Introduction



(for printing purposes – this page intentionally left blank)

About the Parcel Taxes

Since its creation in 1993, the Authority has protected over 30,000 acres of open space and natural areas, preserving the natural beauty and health of the area, and protecting the region’s agriculture, water resources, air quality, wildlife and scenic views for residents today and future generations. As the region continues to grow, protecting hillsides and open spaces become increasingly important to the community.

In November 2014, voters approved the Open Space, Wildlife Habitat, Clean Water, and Increased Public Access Measure (Measure Q), authorizing the Authority to levy a tax of \$24 per parcel annually for 15 years. The tax generates an estimated \$7,883,760 per year in revenue for the Authority to continue protecting and preserving new open space and agricultural areas, protecting and restoring natural areas that buffer our rivers, lakes, and streams, maintaining existing Open Space Preserves, constructing new trails and infrastructure on the Preserves, and increasing the number of environmental education experiences.

In 2020, Measure T, which renews Measure Q, was passed by 81% of the voters to secure funding for the Authority to continue protecting open spaces for future generations. The renewed measure commits to investing in nature in communities and providing Santa Clara Valley residents with more equitable access to nature while stewarding beautiful open spaces forever.

Annual Expenditure Plan Status Report

In order to ensure accountability, transparency and public oversight of all funds collected and allocated under Measure Q and in compliance with Government Code Sections 50075.1(d) and 50075.3, an annual report is provided to the Authority’s Board of Directors on or before January 1 of each fiscal year. The purpose of the report is to explain (1) the amount of funds collected and expended under Measure Q and Measure T and (2) the status of the projects authorized to be funded by Measure Q and Measure T.

The Authority’s fiscal year begins on July 1 and ends on June 30 of each year. The financial data summarized in the report is derived from the annual independent audit. The project status information is a compilation of the projects conducted in the same fiscal year. The *Expenditure Plan Status Report* is prepared by Open Space Authority staff and submitted to the Authority’s Board of Directors.

The [Expenditure Plan Oversight Committee](#) (EPOC), appointed by the Board pursuant to the Expenditure Plan, also receives a copy of the *Status Report* as an informational item. The Committee reviews the *Status Report* alongside the independent financial audit to provide an independent review of all revenues and expenditures of Measure Q and Measure T Funds and submits an oversight report with their recommendations to the Board.

FY 2021/2022 EPOC Oversight Report

In May 2023, the EPOC presented the [Annual Expenditure Plan Oversight Committee Oversight Report for FY 2021/2022](#) to the Authority’s Board of Directors. Their report summarized the findings of the EPOC and provided recommendations regarding the reporting of revenues and expenditures of Measure Q and Measure T for the 2021/2022 fiscal year.

On September 14, 2023, the Board reviewed and considered each recommendation set forth by the Committee and discussed the responses recommended by staff.

To see the complete response to the *Annual EPOC Oversight Report*, please refer to [Appendix B](#).

(for printing purposes – this page intentionally left blank)

Revenues and Expenditures Summary



(for printing purposes – this page intentionally left blank)

Annual Budget and Work Plan Development for the Parcel Tax Funds

The [Measure Q](#) and [Measure T](#) Expenditure Plans provides guidance to the Authority on the use of the parcel tax funds.

During the annual budget and work plan development process, staff proposes projects in service of the Authority’s mission which are aligned with the major project areas stated in the *Expenditure Plans*. Proposed projects are presented to the Authority’s Board during a publicly-noticed Board Workshop, where the Board reviews and discusses the projects and provides staff with clear direction on building a balanced and sustainable budget to support and deliver on the proposed projects.

The Administration and Budget Committee reviews and discusses the proposed budget in detail and staff then brings the proposed budget, along with any changes and recommendations, to the Board for approval. The Board reviews and approves the proposed budget and work plan in a publicly noticed meeting. The resulting *Budget and Annual Work Plan* becomes the guiding document for staff to record and track expenditures for approved projects and goals.

Through this well-established process, the Board provides direction and approval on the budget and work plan consistent with the Authority’s mission and *Expenditure Plans*, reviews quarterly reports of expenditures recorded, and receives the annual financial audit as presented by an independent auditor. The checks and balances put into place through this process also foster strong internal accounting controls to ensure revenues are used in the most effective and efficient manner possible, consistent with serving the public interest and in accordance with existing law and the *Expenditure Plans*.

Annual Independent Financial Audit

As required by the *Expenditure Plans*, an annual independent audit must be conducted to ensure the revenues received and expended by the Authority conforms to the guidelines stated in the Plans.

The independent financial audits for the Measure Q and Measure T funds are currently performed by Moss, Levy & Hartzheim, LLP. During the course of an audit, the independent auditor reviews sufficient and appropriate audit evidence to provide a basis for their opinion. The process includes a comprehensive review of all parcel tax revenues and expenditures as well as an evaluation of the internal controls and appropriateness of accounting policies used. The auditor also reviews and compares the actual revenues and expenditures to the original budget to ensure the Authority remained in compliance with the Board-approved budget.

Moss, Levy & Hartzheim, LLP obtained reasonable assurance that the Authority’s financial statements are free from material misstatement and internal controls present no material weaknesses. The audit of the parcel tax funds for fiscal year 2022/2023 disclosed no instances of noncompliance.



Major Project Areas Identified in the Expenditure Plans

- Preservation: Land Acquisition & Conservation Easements
- Public Access and Amenities: Construction & Capital Projects
- Environmental Education, Activities and Outreach
- Land and Agency Operations & Maintenance
- Natural Resource Management
- Urban Grant Program

Financial Summary for Fiscal Year 2022/2023

The following tables provide a summary of the financial information as presented in the Authority’s independent financial audit conducted by Moss, Levy & Hartzheim, LLP for the fiscal year ended June 30, 2023. The complete audit can be found on the Authority’s [website](#).

Revenues

As determined by SCI Consulting Group, the Authority’s parcel tax administrator, the Authority collected \$12 and \$8,018,268 in gross parcel tax levies from Measure Q and Measure T, respectively. The Santa Clara County Assessor’s Office collects one percent (1%) of the gross revenue as a fee. As summarized in the financial audit, the Authority received and recorded a total of \$7.94 million in net parcel tax revenues in fiscal year 2022/2023.

Table 1: Parcel Tax Revenues	Measure Q	Measure T
Gross Parcel Tax Levies	\$12	\$8,018,268
SCC Assessor’s Fee (1%)	-	(\$80,163)
TOTAL NET REVENUES	\$12	\$7,938,105

Expenditures

On June 9, 2022, the Authority’s Board of Directors approved the annual budget for the Measure Q and Measure T funds for fiscal year 2022/2023.

The Authority originally budgeted Measure Q expenditures at \$4,494,323. Actual expenditures for all Measure Q expenses in FY 2022/2023 were \$1,979,349.

The Authority budgeted Measure T expenditures at \$8,538,834. Actual expenditures for all Measure T expenses in FY 2022/2023 were \$4,450,810.

The following table shows the summary breakdown of total expenditures by program as presented in the independent financial audit.

Table 2: Expenditures by Program	Measure Q	Measure T
Projects (Section II)	\$1,490,044	\$3,369,408
-Capital Outlay		
-Conservation Initiatives and Grants		
-Planning		
-Field Operations and Maintenance		
-Community Engagement		
Urban Grant Program (Section III)	\$489,305	-
Expenditure Plan Oversight Committee Costs (Section IV)	-	\$8,018
Administrative Costs (Section IV)	-	\$993,221
SCC Assessor’s Fee (1%)*	-	\$80,163
TOTAL EXPENDITURES	\$1,979,349	\$4,450,810

*The Santa Clara County’s Assessor’s Office withholds 1% of the parcel tax revenues collected on behalf of the Authority. This fee is deducted from the first deposit in January 2023.

An expenditure is tracked using a project number and charged to an expense account in Acumatica, the Authority's accounting software. Expense accounts are grouped and reported under several major expense categories:

Payroll and Benefits include expenditures related to salaries, payroll taxes, and health benefits of full-time staff, part-time staff, and temporary staff.

Supplies and Consumables include goods and supplies purchased and intended for one-time and/or limited consumption. Examples include project-required supplies, postage, and printing expenses. Field operations-related supplies include safety supplies, fuel, supplies for disposing hazardous materials, vegetation management supplies, signs and fencing materials, and fire management supplies.

Expenses in this category also include mileage reimbursements to staff, as well as travel-related expenditures such as tolls, parking fees, and public transportation to offsite project meetings.

Outside Services include project expenditures related to professional services and consultancies rendered under a contract. Services may include:

- legal services
- design and content services
- community relations and media services
- resource management services such as site monitoring, wildlife management, vegetation management, fire management, public access maintenance, grazing program-related services, etc.
- planning services such as conservation planning, mapping and GIS support, CEQA, Environmental Site Assessment Phase One, etc.
- acquisition and construction-related services such as design and engineering services, surveys and investigations, appraisals, restoration and remediation, testing and inspections, etc.

Other Services and Fees capture miscellaneous fees and other expenses. Examples include business insurance, permitting fees, escrow fees, and brokerage fees. The Santa Clara County's Assessor's Office collector's fee (1%) is recorded under this category.

Equipment and Maintenance expenses include procurement and maintenance of tools, field and shop equipment, and fleet maintenance for vehicles used in field operations and maintenance of the Authority's preserves.

Facilities and Utilities cover all expenditures related to the maintenance of the public access facilities and buildings located on the Authority's preserves, as well as the water and electricity utility bills associated with the operations of the facilities.

Acquisitions capture the cost of acquiring fee title and conservation easements.

Authority Grant Programs disbursements are recorded and reported in this expense category line.



Of the total Measure Q-approved expenditures of \$4,494,323, Table 3 provides a breakdown by major expense category.

Table 3: Measure Q Expenditures by Major Expense Category	Budgeted Expenditures (\$)	Actual Expenditures (\$)	Percent of Total Budget (%)
Payroll and Benefits	\$489,323	\$623,488	14%
Supplies and Consumables	\$0	\$13,666	0%
Outside Services	\$1,525,000	\$845,899	19%
Other Services and Fees	\$627,000	\$5,240	0%
Equipment and Maintenance	\$0	\$1,751	0%
Facilities and Utilities	\$0	\$0	0%
Memberships and Library	\$0	\$0	0%
Acquisitions	\$1,853,000	\$0	0%
Authority Grant Programs	\$0	\$489,305	11%
TOTAL EXPENDITURES	\$4,494,323	\$1,979,349	44%

In Fiscal Year 2022/2023, the Authority utilized 44% of the approved Measure Q budget, as shown in the monochrome pie chart on the left. Of the actual expenditures, the colored pie chart on the right provides a visual breakdown of the \$1,979,349 spent by major expense category.

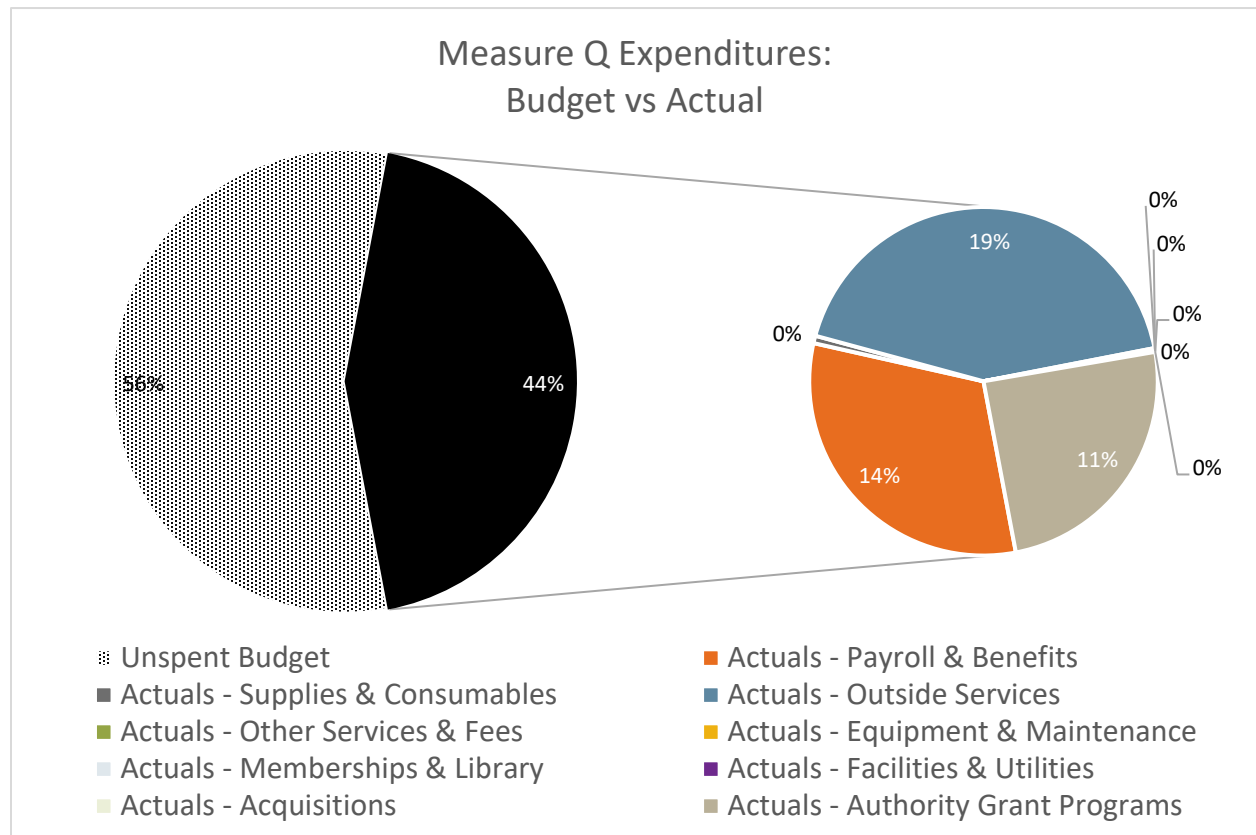


Figure 1

Of the total Measure T-approved expenditures of \$8,538,834, Table 4 provides a breakdown by major expense category.

Table 4: Measure T Expenditures by Major Expense Category	Budgeted Expenditures (\$)	Actual Expenditures (\$)	Percent of Total Budget (%)
Payroll and Benefits	\$4,025,430	\$2,905,664	34%
Supplies and Consumables	\$359,000	\$338,265	4%
Outside Services	\$2,451,855	\$794,934	9%
Other Services and Fees	\$419,759	\$169,525	2%
Equipment and Maintenance	\$320,790	\$215,363	3%
Facilities and Utilities	\$462,000	\$22,225	0%
Memberships and Library	\$0	\$4,833	0%
Acquisitions	\$0	\$0	0%
Authority Grant Programs	\$500,000	\$0	0%
TOTAL EXPENDITURES	\$8,538,834	\$4,450,810	52%

In Fiscal Year 2022/2023, the Authority utilized 52% of the approved Measure T budget, as shown in the monochrome pie chart on the left. Of the actual expenditures, the colored pie chart on the right provides a visual breakdown of the \$4,450,810 spent by major expense category.

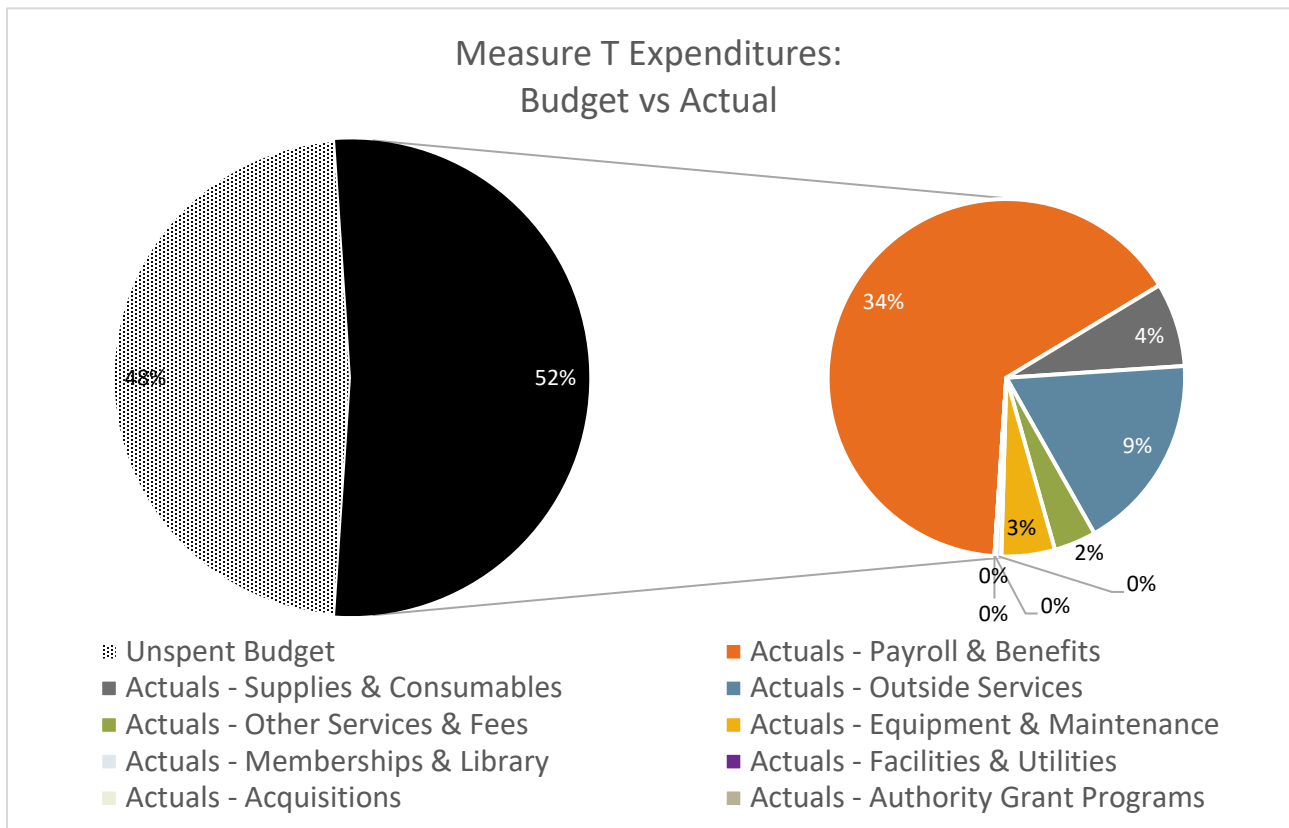


Figure 2

(for printing purposes – this page intentionally left blank)

Expenditure Plan Projects and Expenditures for Fiscal Year 2022/2023



(for printing purposes – this page intentionally left blank)

Parcel Tax Funded Programs and Projects

The *Measure Q Expenditure Plan* ([Appendix C](#)) and *Measure T Expenditure Plan* ([Appendix D](#)) state that the Open Space Authority will fund high priority projects distributed throughout the Santa Clara Valley Open Space Authority's jurisdiction. The projects were identified through a public process that informed conservation strategies and priorities for the Authority. The resulting vision plan developed by the Authority, the [Santa Clara Valley Greenprint](#), identifies critical open space, agricultural, and natural resource lands for protection and restoration.

Parcel tax revenues are used for:

- Funding the preservation of land including acquisitions and conservation easements.
- Paying for project costs including research, project-scoping, planning, construction, and maintenance.
- Paying for staff time associated with Measure Q and Measure T projects.
- Natural resource protection to protect and restore natural areas.
- Land operations and maintenance to maintain all of the Authority's existing and new preserves, trails and preserve-related infrastructure.
- The creation, development, delivery, and maintenance of existing and new environmental and agricultural education programs and initiatives.
- Funding the Urban Grant Program.

Expenditure Plan Categories

All projects funded by parcel tax revenues fall into at least one of the Expenditure Plan Categories (EPC) described in the *Expenditure Plans*. In Fiscal Year 2022/2023, the Authority expended a total of \$4,859,452 on eligible projects and disbursed \$489,305 to Urban Grant Program grantees.

Tables 5-8 on the following pages summarize the total costs spent in Fiscal Year 2022/2023 and the status of each project in each Expenditure Plan Category.

[Appendix A](#) is a complete index of all projects funded by Measure Q and Measure T funds in Fiscal Year 2022/2023. The table is sorted by project number and only lists project expenditures in service of the Expenditure Plan Categories. It does not include administrative fees and costs, committee costs, and grants disbursed under the Urban Grant Program.

(for printing purposes – this page intentionally left blank)

EPC #1 Protect Open Space, Redwood Forests, Wildlife Habitat, Scenic Hillside and Agricultural Land

Projects categorized under this program include acquisition of land and conservation easements from willing sellers in priority areas such as those in the Coyote Ridge, Upper Pajaro River, and Santa Cruz Mountains Conservation Focus Areas, as well as coordination of protection efforts through the development of policy frameworks, conservation strategies and tools, and resource management and use plans for open spaces, agricultural lands, and wildlife habitats.

In this reported fiscal year, the Authority expended \$1,310,871 on projects under this category.



Bay Property Donation



Annual Expenditure Plan Status Report – FY 2022/2023

Table 5: EPC #1 Projects

<i>Project Number</i>	<i>Project</i>	<i>MQ Funds Expended in FY 22/23</i>	<i>MT Funds Expended in in FY 22/23</i>	<i>Status</i>	<i>% of EPC 1 Total Expenditures</i>
K-000188	Regional Project Reviews		47,948	Ongoing	4%
P-000014	Fuels Management Plan		26,626	In Progress - Delayed	2%
P-000019	Priority Land Acquisition Projects	138,646	62,993	Ongoing	15%
P-000024	Coyote Valley Conservation Strategy		59,723	Ongoing	5%
P-000026	Santa Clara Valley Agricultural Plan		29,246	Completed	2%
P-000112	Conservation Easement Monitoring		8,282	Ongoing	1%
P-000123	Natural Resource Policy and Planning		69,091	Ongoing	5%
P-000203	Tilton Ranch Acquisition	12,236	30,399	In Progress - On Track	3%
P-000249	Coyote Valley Acquisitions	71,116		In Progress - On Track	5%
P-000250	Coyote Valley Conservation Areas Master Plan		733,118	In Progress - On Track	56%
P-000327	Environmental Credits Program w City of San Jose		5,492	Completed	0%
P-000337	Bay Property Donation		15,955	Completed	1%
TOTAL EXPENDITURES FOR EPC 1		221,998	1,088,873		

EPC #2 Protect Land around Creeks, Rivers and Streams to Prevent Pollution and Improve Local Water Quality and Supply

Projects categorized under this program include coordinating efforts to protect local water supply and quality, and restoration and capital improvements.

In this reported fiscal year, the Authority expended \$79,249 on projects under this category.



Fisher's Creek Riparian Habitat Restoration



Fisher Creek Riparian Habitat Restoration

Annual Expenditure Plan Status Report – FY 2022/2023

Table 6: EPC #2 Projects

<i>Project Number</i>	<i>Project</i>	<i>MQ Funds Expended in FY 22/23</i>	<i>MT Funds Expended in FY 22/23</i>	<i>Status</i>	<i>% of EPC 2 Total Expenditures</i>
P-000158	Coyote Ridge Open Space Preserve Grazing and Habitat Improvements		15,342	Completed	19%
P-000227	Blair Ranch Pond Habitat Enhancement (RC-07 & RC-10)		19,612	In Progress - Delayed	25%
P-000251	Pajaro River Riparian Restoration		8,474	In Progress - Delayed	11%
P-000269	Fisher Creek Riparian Habitat Restoration (SEP-funded)		5,533	Completed	7%
P-000307	Spreckles Wetland Enhancement Project		3,510	In Progress - Delayed	4%
P-000308	Fisher Creek Riparian Habitat Restoration (BEF-Funded)		7,439	In Progress – On Track	9%
P-000343	Fisher Creek Riparian Habitat Restoration (NFWF-Funded)		4,559	In Progress - Delayed	6%
P-000344	Llagas Creek and Pajaro River Confluence Restoration Project		14,780	In Progress – On Track	19%
TOTAL EXPENDITURES FOR EPC 2			79,249		

EPC #3 Open, Improve and Maintain Parks, Open Space, and Trails

Projects categorized under this program include planning for and opening new open space preserves, designing and constructing new public access facilities on existing preserves, and providing science-based environmental education programs designed and created by Authority staff or through partnerships. This program also funds daily operation, management, and stewardship of the Authority’s existing lands and public access facilities.

In this reported fiscal year, the Authority expended \$3,465,266 on projects under this category.



Annual Expenditure Plan Status Report – FY 2022/2023

Table 7: EPC #3 Projects

<i>Project Number</i>	<i>Project</i>	<i>MQ Funds Expended in FY 22/23</i>	<i>MT Funds Expended in FY 22/23</i>	<i>Status</i>	<i>% of EPC 3 Total Expenditures</i>
P-000028	Coyote Ridge Open Space Preserve Public Access Plan	1,105,143		In Progress - On Track	32%
P-000032	Coyote Valley Open Space Preserve Improved North Meadow Public Access	123,648		In Progress - On Track	4%
P-000035	Coyote Valley Open Space Preserve Equestrian Lot Improvements		683	In Progress - Delayed	0%
P-000036	Rancho Cañada del Oro Llagas Creek Bridge and Day Use Area	39,257		In Progress - On Track	1%
P-000087	Coyote Valley Open Space Preserve Operations & Maintenance		268,420	Ongoing	8%
P-000088	Sierra Vista Open Space Preserve Operations & Maintenance		718,944	Ongoing	21%
P-000089	Coyote Ridge Open Space Preserve Operations & Maintenance		80,525	Ongoing	2%
P-000090	Rancho Cañada del Oro Open Space Preserve Operations & Maintenance		244,737	Ongoing	7%
P-000091	Diablo Foothills Open Space Preserve Operations & Maintenance		35,585	Ongoing	1%
P-000092	Little Uvas Open Space Preserve Operations & Maintenance		8,177	Ongoing	0%
P-000093	Palassou Ridge Open Space Preserve Operations & Maintenance		15,574	Ongoing	0%
P-000095	North Pajaro River Agricultural Preserve Operations & Maintenance		21,790	Ongoing	1%
P-000096	Santa Teresa Foothills Open Space Preserve Operations & Maintenance		5,816	Ongoing	0%
P-000097	Upper Uvas Open Space Preserve Operations & Maintenance		2,858	Ongoing	0%
P-000098	Mount Chual Open Space Preserve Operations & Maintenance		3,491	Ongoing	0%
P-000099	El Toro Open Space Preserve Operations & Maintenance		3,218	Ongoing	0%
P-000202	South Pajaro River AP Operations & Maintenance		4,749	Ongoing	0%
P-000247	Interp & Environmental Education Program		218,725	Ongoing	6%
P-000248	Volunteer Program		98,827	Ongoing	3%
P-000267	North Coyote Valley Conservation Area Operations & Maintenance		51,221	Ongoing	1%
P-000268	Tulare Meadows Operations & Maintenance		37,371	Ongoing	1%
P-000272	Fisher's Bend Agricultural Preserve Operations & Maintenance		14,806	Ongoing	0%
P-000280	American Disabilities Act Transition Plan		108,929	In Progress - On Track	3%
P-000283	Parking Reservation System		2,130	In Progress - Delayed	0%
P-000309	COVA Operations and Maintenance		82,059	Ongoing	2%
P-000336	Monarch Habitat Restoration Project		2,582	In Progress – On Track	0%
P-000342	Environmental Training Center at Gavilan College		1,639	Completed	0%
P-000346	Tilton House Complex Home Improvements		65,035	In Progress – On Track	2%
P-000349	Sobrato Boundary Fenceline		46,279	Completed	1%
P-000350	Croy Redwoods Operation & Maintenance		441	Ongoing	0%

Annual Expenditure Plan Status Report – FY 2022/2023

<i>Project Number</i>	<i>Project</i>	<i>MQ Funds Expended in FY 22/23</i>	<i>MT Funds Expended in FY 22/23</i>	<i>Status</i>	<i>% of EPC 3 Total Expenditures</i>
P-000352	Coyote Valley Operation & Maintenance		188	Ongoing	0%
P-000353	2023 Winter Storms Emergency Response and Repairs		52,419	In Progress – On Track	2%
TOTAL EXPENDITURES FOR EPC 3		1,268,048	2,197,218		

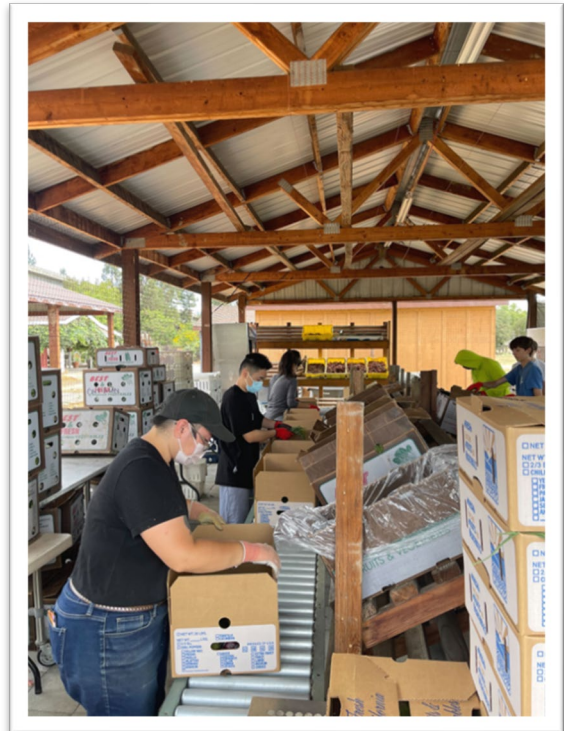
(for printing purposes – this page intentionally left blank)

EPC #4 Urban Open Space, Parks and Environmental Education Program

As structured by the *Expenditure Plan*, a grant program would be established, with monies set aside to assist municipalities, schools and applicable non-profit organizations, for projects within the cities of Milpitas, Santa Clara, San Jose, Campbell, Morgan Hill and urban County areas to create healthy and safe open space and park areas for their communities. Funds are made available through an annual grant allocation process that is subject to approval by the Authority’s Governing Board of Directors.



Clockwise starting from the left – Bay Area Older Adults Trailblazers Program; Veggielution: Eastside Connect; Silicon Valley Bicycle Coalition: RIDESV Enviro Series



Annual Expenditure Plan Status Report – FY 2022/2023

Table 8: EPC #4 Disbursements

Grant Number	Project	Funds Disbursed in FY 22/23	Status	% of EPC 4 Total Disbursements
G-000015	The Santa Clara County Food System Alliance	24,963	Closed	5%
G-000016	Keep Coyote Creek Beautiful	6,247	Open	1%
G-000017	City of Morgan Hill	231,333	Closed	47%
G-000025	Keep Coyote Creek Beautiful Coyote Creek Education Expansion	6,236	Closed	1%
G-000026	Guadalupe River Park Conservancy Guadalupe Gardens Open Space Protection	-	Closed	0%
G-000040	Our City Forest Urban Forestry Outdoor Classroom	9,431	Closed	2%
G-000046	Sacred Heart Community Service	-	Open	0%
G-000047	Earth Island Institute - BAWT	15,421	Closed	3%
G-000048	Santa Clara Unified School District	29,828	Closed	6%
G-000050	Veggielution	46,974	Open	10%
G-000051	Santa Clara Valley Audubon Society	5,421	Open	1%
G-000052	Bay Area Older Adults	29,273	Open	6%
G-000053	Guadalupe River Park Conservancy	7,325	Open	1%
G-000054	Santa Clara County Public Health Department	16,588	Open	3%
G-000055	San Jose State University Research Foundation	34,923	Open	7%
G-000056	Living Classroom	5,521	Closed	1%
G-000058	Silicon Valley Bicycle Coalition	15,514	Open	3%
G-000059	San Francisco Bay Bird Observatory	4,311	Open	1%
G-000060	Acterra: Action for a Healthy Planet	-	Not Yet Started	0%
G-000061	Bay Area Ridge Trail Council	-	Not Yet Started	0%
G-000062	City of Santa Clara Parks and Recreation Department	-	Not Yet Started	0%
G-000063	Earth Island Institute - by Area Wilderness Training	-	Not Yet Started	0%
G-000064	Garden to Table Silicon Valley	-	Not Yet Started	0%
G-000065	Green Foothills	-	Not Yet Started	0%
G-000066	Guadalupe River Park Conservancy	-	Not Yet Started	0%
G-000067	San Jose Conservation Corps and Charter School	-	Not Yet Started	0%
G-000068	San Jose State University Research Foundation	-	Not Yet Started	0%
G-000069	Santa Clara Unified School District	-	Not Yet Started	0%
G-000070	Saved by Nature	-	Not Yet Started	0%
G-000071	Valley Verde	-	Not Yet Started	0%
G-000072	Veggielution	-	Not Yet Started	0%
TOTAL EXPENDITURES FOR EPC 4		489,305		

More information regarding the Urban Grant Program and disbursements recorded under this category is provided in Section III of this report.

Status and Expenditures by Project

As stated in the *Expenditure Plans*, Authority staff are required to file a report with the Board of Directors on the status of projects that received Measure Q and Measure T funds for the fiscal year being reported. To collect the necessary data, the Authority utilizes Acumatica, a financial ERP system, to track expenditures by Project IDs.

Beginning with Fiscal Year 2019/2020, the Authority began reporting the statuses of work plan projects to the Board of Directors on a quarterly basis.

In Fiscal Year 2022/2023, the Authority tracked and reported on over fifty individual projects. The project status pages provide an update for each project as of June 30, 2023.

Table 9: Status Definitions	
Status	Description
Ongoing	Applicable to some program and preserve operation & maintenance project IDs. These Acumatica Project IDs track MQ-eligible expenditures but typically do not appear on the agency’s Annual Work Plan since they do not have projected end dates
In Progress – On Track	The project is active and the declared milestones for the fiscal year have been completed
In Progress – Ahead of Schedule	The project is active and additional work has been completed beyond the declared milestones for the fiscal year
In Progress – Delayed	The project is active but some of the declared milestones for the fiscal year have not been completed
On Hold	The project has been placed on hold. Minimal work may have been performed during the fiscal year prior to being placed on hold
Completed	The project is completed

A project may be delayed or placed on hold for various reasons, including but not limited to: lack of funding sources, limited staff capacity, permitting delays, unforeseen environmental impacts, reprioritization, etc. The following projects have been placed on hold in Fiscal Year 2022/2023:

Table 10: Projects Placed on Hold	
Project Number	Project
P-000033	Dexter Canyon Bridge Replacement
P-000324	Rancho Canada del Oro Open Space Preserve Backcountry Trail Planning
P-000325	Rancho Canada del Oro Public Access and Maintenance Improvements

Due to the confidential nature of ongoing negotiations, expenses incurred for all current acquisition projects are reported under P-000019 (Priority Land Acquisition Projects). Descriptions and a breakdown of expenditures for acquisitions are only presented in the report after the close of escrow.

By June 30, 2023, the Authority completed the following projects by the end of the fiscal year:

Project Number	Project
P-000026	Santa Clara Valley Agricultural Plan
P-000158	Coyote Ridge Grazing Improvements and Habitat Improvements
P-000269	Fisher Creek Riparian Habitat Restoration
P-000327	Environmental Credits Program with City of San Jose
P-000337	Bay Property Donation
P-000342	Environmental Training Center at Gavilan College
P-000349	Sobrato Boundary Fenceline

The project status pages are grouped and presented by EPC number.

How to Read the Project Status Pages

EPC #X **Project Name**

Project Description
 The description may include the general scope of work, the lasting impacts of the project, tasks and milestones, and/or the deliverable(s) to be expected upon project completion. Description may also include information about additional funding sources, partnerships, and/or the location of the project.
 Additional status information may be available for delayed projects.

Expenditure Overview – complete summary of all monies spent to date on the project

Fiscal Years	Funder	Funding Source	Amount
FY 20XX-20XX	Open Space Authority	Measure Q Parcel Tax	
FY 20XX-20XX	Open Space Authority	Measure Q Parcel Tax	
FY 20XX-20XX	Open Space Authority	Measure T Parcel Tax	
PROJECT TOTAL COST			-

FY 20XX/20XX Expenditure Breakdown – details of MQ and MT expenses spent in the reporting fiscal year, by major expense category

Expense Category	MQ Amount	MT Amount
Payroll and Benefits		
Supplies and Consumables		
Outside Services		
Other Services and Fees		
Equipment and Maintenance		
Facilities and Utilities		
Acquisitions		
TOTAL FOR FISCAL YEAR 20XX/20XX		

Outside Services include: Types of outside services used will be provided in order of dollars spent (greatest to least)
Note: information on the types of expenditures that may be classified into each expense category can be found on page 9 of this report.

Project Number
 Unique Number assigned in project tracking system and used to track expenditures

Program Information
 Information about the project

Status
 Status of the project as of fiscal year end

1. Status Pages are grouped by Expenditure Plan Category (EPC)

2. Status Pages are ordered by Project Number

3. Status indicator

4. Current fiscal year expenditures are categorized and shown in this table

5. Running total cost for each project is summarized in this table

Figure 3

(for printing purposes – this page intentionally left blank)

An aerial photograph of a vast, rolling landscape. The foreground and middle ground consist of numerous green hills and valleys, some of which are densely forested. In the background, a range of larger, more rugged mountains stretches across the horizon under a clear, bright sky. The overall scene is a lush, natural environment.

EXPENDITURE PLAN CATEGORY #1

(for printing purposes – this page intentionally left blank)

EPC #1

Regional Project Reviews

Project
Number
K-000188

Program
Conservation

Status
Ongoing

Project Description

As part of the Authority's conservation efforts in the region, the agency reviews regional plans, development projects and associated environmental impact reports and agency initiatives or policies that may have an effect on conservation within the Authority's jurisdictions. These projects may also alert Authority staff to a potential acquisition opportunity that needs to be reviewed. Work included under this project number encompasses reviewing the policy or project documents and developing a response or series of comments that needs to be submitted to the relevant agency such that they consider the Authority's position and potentially make a more informed decision. There are also times when these projects require legal review.

The Authority is respected in the conservation community, and the preparation of expert comments and technical narratives for the purpose of informing or guiding partner agency decision-making is a critical part of the Authority's mission-wide conservation work.

Expenditure Overview

Fiscal Years	Funder	Funding Source	Amount
FY 2015-2022	Open Space Authority	Measure Q Parcel Tax	\$98,221
FY 2015-2022	Open Space Authority	Measure T Parcel Tax	\$45,426
FY 2022-2023	Open Space Authority	Measure Q Parcel Tax	
FY 2022-2023	Open Space Authority	Measure T Parcel Tax	\$47,948
PROJECT TOTAL COST			\$191,595

FY 2022/2023 Expenditure Breakdown

Expense Category	MQ Amount	MT Amount
Payroll and Benefits		\$47,948
Supplies and Consumables		
Outside Services		
Other Services and Fees		
Equipment and Maintenance		
Facilities and Utilities		
Acquisitions		
TOTAL FOR FISCAL YEAR 2022/2023		\$47,948

Outside Services include:

Note: Information on the types of expenditures that may be classified into each expense category can be found on page 9 of this report.

EPC #1

Fuels Management Program

Project
Number
P-000014

Program
Resource
Management

Status
In Progress -
Delayed

Project Description

Staff is reviewing the needs and benefits of developing a wildfire management program that will serve to assess the Authority's lands for wildfire hazards, prevention and management. Work includes developing a wildlands fuel management policy and plan that will define fuel management goals and objectives, identify and prioritize fuel reduction treatments, and describe methods that reduce wildfire risk and achieve natural resource goals across Authority lands.

Due to staffing shortage, project schedule has been adjusted. Completion of project will be dependent on hiring of a Habitat Stewardship Program Manager.

Expenditure Overview

Fiscal Years	Funder	Funding Source	Amount
FY 2015-2022	Open Space Authority	Measure Q Parcel Tax	\$21,188
FY 2015-2022	Open Space Authority	Measure T Parcel Tax	\$66,182
FY 2022-2023	Open Space Authority	Measure Q Parcel Tax	
FY 2022-2023	Open Space Authority	Measure T Parcel Tax	\$26,626
PROJECT TOTAL COST			\$113,996

FY 2022/2023 Expenditure Breakdown

Expense Category	MQ Amount	MT Amount
Payroll and Benefits		\$8,434
Supplies and Consumables		
Outside Services		\$18,192
Other Services and Fees		
Equipment and Maintenance		
Facilities and Utilities		
Acquisitions		
TOTAL FOR FISCAL YEAR 2022/2023		\$26,626

Outside Services include: Fire Management

Note: Information on the types of expenditures that may be classified into each expense category can be found on page 9 of this report.

EPC #1

Priority Land Acquisition Projects

Project
Number
P-000019

Program
Acquisition

Status
Ongoing

Project Description

Work under this project includes protection of land in the Conservation Focus Areas as outlined in the Santa Clara Valley Greenprint through purchase of fee title, conservation easement, or other real property interest. Prior to pursuing protection of a property, scope of work includes conducting preliminary due diligence, engaging with willing sellers, and performing early analysis of site/local resources and internal evaluation to determine if a potential acquisition meets the Authority's criteria for purchase. Due to the confidential nature of ongoing negotiations, property names, property owner(s) information, and other details are withheld.

Expenditure Overview

Fiscal Years	Funder	Funding Source	Amount
FY 2015-2022	Open Space Authority	Measure Q Parcel Tax	\$940,722
FY 2015-2022	Open Space Authority	Measure T Parcel Tax	\$101,692
FY 2015-2022	County of Santa Clara	MOU for Acquisition of Agricultural Conservation Easements	\$9,100
FY 2022-2023	Open Space Authority	Measure Q Parcel Tax	\$138,646
FY 2022-2023	Open Space Authority	Measure T Parcel Tax	\$62,993
FY 2022-2023	County of Santa Clara	MOU for Acquisition of Agricultural Conservation Easements	\$5,268
PROJECT TOTAL COST			\$1,258,421

FY 2022/2023 Expenditure Breakdown

Expense Category	MQ Amount	MT Amount
Payroll and Benefits	\$116,582	\$34,594
Supplies and Consumables	\$196	
Outside Services	\$21,066	\$27,489
Other Services and Fees	\$802	
Equipment and Maintenance		
Facilities and Utilities		
Acquisitions		
TOTAL FOR FISCAL YEAR 2022/2023	\$138,646	\$62,993

Outside Services include: Legal Services; Prime Engineering; Appraisals

Note: Information on the types of expenditures that may be classified into each expense category can be found on page 9 of this report.

Project
Number
P-000024

Program
Conservation

Status
Ongoing

Project Description

This project encompasses the larger conservation vision for the long term protection of Coyote Valley. Coyote Valley represents the last remaining contiguous block of undeveloped open land in Santa Clara County. It is a critical wildlife corridor between the Santa Cruz Mountains and the Diablo Range. It also contains some of the last remaining prime farms soils in the County.

The strategy includes cross-departmental work on a comprehensive plan to protect and maintain the multiple natural and agricultural benefits and environmental services, including wildlife connectivity in Coyote Valley across thousands of acres. Given the current development threats to the remaining vacant lands in Coyote Valley, this initiative has been a key focus of the Authority. This work requires extensive technical planning, policy review and coordination with a wide range of lawmakers and stakeholders. The work also includes taking initiative and hosting partner meetings to identify important steps and strategies to preserve this important landscape.

Expenditure Overview

Fiscal Years	Funder	Funding Source	Amount
FY 2015-2022	Open Space Authority	Measure Q Parcel Tax	\$519,864
FY 2015-2022	Open Space Authority	Measure T Parcel Tax	\$80,340
FY 2022-2023	Open Space Authority	Measure Q Parcel Tax	
FY 2022-2023	Open Space Authority	Measure T Parcel Tax	\$59,723
PROJECT TOTAL COST			\$647,320

FY 2022/2023 Expenditure Breakdown

Expense Category	MQ Amount	MT Amount
Payroll and Benefits		\$59,723
Supplies and Consumables		
Outside Services		
Other Services and Fees		
Equipment and Maintenance		
Facilities and Utilities		
Acquisitions		
TOTAL FOR FISCAL YEAR 2022/2023		\$59,723

Outside Services include:

Note: Information on the types of expenditures that may be classified into each expense category can be found on page 9 of this report.

EPC #1

Santa Clara Valley Agricultural Plan

Project
Number
P-000026

Program
Conservation

Status
Completed

Project Description

The Santa Clara Valley Climate and Agricultural Protection Program (CAPP) is a regional effort led by Santa Clara County and the Santa Clara Valley Open Space Authority to protect Southern Santa Clara County’s important farmland and reduce future effects of climate change. The CAPP is funded in part by a statewide program called the Sustainable Agricultural Lands Conservation Program (SALCP) which provides cap and trade funding to protect agricultural lands in order to reduce greenhouse gas emissions to meet California’s climate change goals. The Santa Clara County Agricultural Plan was completed in 2017. The County and Authority is working on implementing the Agricultural Plan, including an Agricultural Conservation Easement program, in Santa Clara County and has been awarded a second grant funded through SALCP for this work.

County has submitted SALC-funded report to the Department of Conservation. The Authority will pivot this project towards continuing to refine our Agricultural Program.

Expenditure Overview

Fiscal Years	Funder	Funding Source	Amount
FY 2015-2022	Open Space Authority	Measure Q Parcel Tax	\$356,658
FY 2015-2022	Open Space Authority	Measure T Parcel Tax	\$34,742
FY 2022-2023	Open Space Authority	Measure Q Parcel Tax	
FY 2022-2023	Open Space Authority	Measure T Parcel Tax	\$29,246
PROJECT TOTAL COST			\$420,646

FY 2022/2023 Expenditure Breakdown

Expense Category	MQ Amount	MT Amount
Payroll and Benefits		\$29,246
Supplies and Consumables		
Outside Services		
Other Services and Fees		
Equipment and Maintenance		
Facilities and Utilities		
Acquisitions		
TOTAL FOR FISCAL YEAR 2022/2023		\$29,246

Outside Services include:

Note: Information on the types of expenditures that may be classified into each expense category can be found on page 9 of this report.

EPC #1

Conservation Easement Monitoring

Project
Number
P-000112

Program
Conservation

Status
Ongoing

Project Description

As of June 30, 2023, the Authority holds 16 conservation easements. Just before an easement is recorded, staff prepares a baseline report of existing conditions to record the uses and structures on the site. Each year, staff conducts annual monitoring and creates a report for each easement to document any changes that may have taken place and to ensure that the site is being managed in compliance with the terms of the easement.

Expenditure Overview

Fiscal Years	Funder	Funding Source	Amount
FY 2015-2022	Open Space Authority	Measure Q Parcel Tax	\$183,761
FY 2015-2022	Open Space Authority	Measure T Parcel Tax	\$10,373
FY 2022-2023	Open Space Authority	Measure Q Parcel Tax	
FY 2022-2023	Open Space Authority	Measure T Parcel Tax	\$8,282
PROJECT TOTAL COST			\$202,416

FY 2022/2023 Expenditure Breakdown

Expense Category	MQ Amount	MT Amount
Payroll and Benefits		\$8,282
Supplies and Consumables		
Outside Services		
Other Services and Fees		
Equipment and Maintenance		
Facilities and Utilities		
Acquisitions		
TOTAL FOR FISCAL YEAR 2022/2023		\$8,282

Outside Services include:

Note: Information on the types of expenditures that may be classified into each expense category can be found on page 9 of this report.

EPC #1

Natural Resource Policy and Planning

Project
Number
P-000123

Program
Resource
Management

Status
Ongoing

Project Description

An ongoing project that encompasses strategic planning coordination within the Authority and with regional partners to engage in current and state of the art resource management practices and projects on its preserves. Scope of work includes specialized training or discussion related to natural resource management practices and tools that are the subject of research or other current thought leadership. This assists the agency in staying current with best practices and with planning and developing new management projects that provide maximum benefits for its lands and efficiency for the field teams and others conducting the work. Work will also include coordination with field staff on resource management activities and day to day oversight of the resource management program.

Expenditure Overview

Fiscal Years	Funder	Funding Source	Amount
FY 2015-2022	Open Space Authority	Measure Q Parcel Tax	\$104,507
FY 2015-2022	Open Space Authority	Measure T Parcel Tax	\$27,514
FY 2022-2023	Open Space Authority	Measure Q Parcel Tax	
FY 2022-2023	Open Space Authority	Measure T Parcel Tax	\$69,091
PROJECT TOTAL COST			\$201,112

FY 2022/2023 Expenditure Breakdown

Expense Category	MQ Amount	MT Amount
Payroll and Benefits		\$69,091
Supplies and Consumables		
Outside Services		
Other Services and Fees		
Equipment and Maintenance		
Facilities and Utilities		
Acquisitions		
TOTAL FOR FISCAL YEAR 2022/2023		\$69,091

Outside Services include:

Note: Information on the types of expenditures that may be classified into each expense category can be found on page 9 of this report.

EPC #1

Tilton Ranch Acquisition

Project
Number
P-000203

Program
Acquisition

Status
In Progress -
On Track

Project Description

Tilton Ranch totals ~1,861 acres and spans from Coyote Valley Open Space Preserve to just north of the Morgan Hill city limits. After many years of negotiations between the former owner and the Authority in partnership with the Valley Habitat Agency, the Valley Habitat Agency purchased Tilton Ranch in October 2020. Through a funding agreement, the Authority contributed \$1,379,090, plus \$1,000,000 in grant funds from the Metropolitan Transportation Commission's Priority Conservation Area Program towards the acquisition of the main Tilton Ranch. The aim of this project is to transfer fee title of Tilton Ranch to the Authority with a conservation easement to be retained by the Habitat Agency so that it can be enrolled into the Santa Clara Valley Habitat Conservation Plan's Reserve system.

Negotiation of the conservation easement for enrollment of lands by Habitat Agency still in progress.

Expenditure Overview

Fiscal Years	Funder	Funding Source	Amount
FY 2015-2022	Open Space Authority	Measure Q Parcel Tax	\$3,538,521
FY 2015-2022	Open Space Authority	Measure T Parcel Tax	\$413,043
FY 2022-2023	Open Space Authority	Measure Q Parcel Tax	\$12,236
FY 2022-2023	Open Space Authority	Measure T Parcel Tax	\$30,399
PROJECT TOTAL COST			\$3,994,199

FY 2022/2023 Expenditure Breakdown

Expense Category	MQ Amount	MT Amount
Payroll and Benefits	\$12,236	\$20,647
Supplies and Consumables		
Outside Services		\$9,752
Other Services and Fees		
Equipment and Maintenance		
Facilities and Utilities		
Acquisitions		
TOTAL FOR FISCAL YEAR 2022/2023	\$12,236	\$30,399

Outside Services include: Legal Services

Note: Information on the types of expenditures that may be classified into each expense category can be found on page 9 of this report.

EPC #1

Coyote Valley Acquisitions

Project
Number
P-000249

Project Description

Coordinate with POST and City of San Jose to permanently protect land in the North Coyote Valley as identified in the Landscape Linkage report and in support of the City's Measure T.

Program
Acquisition

Expenditure Overview

Status
In Progress -
On Track

Fiscal Years	Funder	Funding Source	Amount
FY 2015-2022	Open Space Authority	Measure Q Parcel Tax	\$5,378,937
FY 2015-2022	Open Space Authority	Measure T Parcel Tax	
FY 2022-2023	Open Space Authority	Measure Q Parcel Tax	\$71,116
FY 2022-2023	Open Space Authority	Measure T Parcel Tax	
PROJECT TOTAL COST			\$5,450,053

FY 2022/2023 Expenditure Breakdown

Expense Category	MQ Amount	MT Amount
Payroll and Benefits	\$69,134	
Supplies and Consumables		
Outside Services	\$1,983	
Other Services and Fees		
Equipment and Maintenance		
Facilities and Utilities		
Acquisitions		
TOTAL FOR FISCAL YEAR 2022/2023	\$71,116	

Outside Services include: Legal Services

Note: Information on the types of expenditures that may be classified into each expense category can be found on page 9 of this report.

Project
Number
P-000250

Program
Conservation

Status
In Progress -
On Track

Project Description

A master vision plan for Authority and partner-owned conservation lands in Coyote Valley as implementation to the 2017 Coyote Valley Landscape Linkage Report. The plan will set forth landscape scale strategies and site-specific implementation actions for integrating multi-benefit values and features with the goal of long-term conservation and ecological restoration.

Work on Phase 2 (Site Inventory & Assessment) and Phase 3 (Preliminary Visioning) remain in-progress. Staff continues to coordinate with POST on the Monterey Road wildlife crossing feasibility study and City of San Jose on its Monterey Road land use study.

Expenditure Overview

Fiscal Years	Funder	Funding Source	Amount
FY 2015-2022	Open Space Authority	Measure Q Parcel Tax	\$843,637
FY 2015-2022	Open Space Authority	Measure T Parcel Tax	\$467,369
FY 2015-2022	CA Wildlife Conservation Board	Proposition 68 California Drought, Water, Parks, Climate, Coastal Protection and Outdoor Access for All Fund	\$52,970
FY 2022-2023	Open Space Authority	Measure Q Parcel Tax	
FY 2022-2023	Open Space Authority	Measure T Parcel Tax	\$733,118
FY 2022-2023	CA Wildlife Conservation Board	Proposition 68 California Drought, Water, Parks, Climate, Coastal Protection and Outdoor Access for All Fund	\$147,510
FY 2022-2023	Santa Clara County MOU	Santa Clara County MOU	\$17,415
FY 2022-2023	Private Grant	Private Grant	\$6,926
PROJECT TOTAL COST			\$2,268,362

FY 2022/2023 Expenditure Breakdown

Expense Category	MQ Amount	MT Amount
Payroll and Benefits		\$268,967
Supplies and Consumables		\$5,298
Outside Services		\$455,797
Other Services and Fees		\$3,055
Equipment and Maintenance		
Facilities and Utilities		
Acquisitions		
TOTAL FOR FISCAL YEAR 2022/2023		\$733,118

Outside Services include: Planning Services; Community Relations; Legal Services

Note: Information on the types of expenditures that may be classified into each expense category can be found on page 9 of this report.

EPC #1

Environmental Credits Program w CSJ

Project
Number
P-000327

Project Description

In partnership with the City of San Jose, the Authority will explore the feasibility of a pilot environmental credits program that that will build off of the proof of concept the City is currently evaluating to create a funding stream for land conservation and restoration in Coyote Valley.

Program
Conservation

POST and its consultants have been leading the effort, with support by the Authority.

Status
Completed

Expenditure Overview

Fiscal Years	Funder	Funding Source	Amount
FY 2015-2022	Open Space Authority	Measure Q Parcel Tax	
FY 2015-2022	Open Space Authority	Measure T Parcel Tax	\$4,833
FY 2022-2023	Open Space Authority	Measure Q Parcel Tax	
FY 2022-2023	Open Space Authority	Measure T Parcel Tax	\$5,492
PROJECT TOTAL COST			\$10,325

FY 2022/2023 Expenditure Breakdown

Expense Category	MQ Amount	MT Amount
Payroll and Benefits		\$5,492
Supplies and Consumables		
Outside Services		
Other Services and Fees		
Equipment and Maintenance		
Facilities and Utilities		
Acquisitions		
TOTAL FOR FISCAL YEAR 2022/2023		\$5,492

Outside Services include:

Note: Information on the types of expenditures that may be classified into each expense category can be found on page 9 of this report.

EPC #1

Bay Property Donation

Project
Number
P-000337

Program
Acquisition

Status
Completed

Project Description

Donation from the Bay family of 80 acres located in the Southern Santa Cruz Mountains (APN 756-04-022) (Property). The Property is located in the eastern foothills of the Santa Cruz Mountains within unincorporated Santa Clara County, adjacent to the Authority's Croy Redwoods Preserve, which was donated by the McPhee family in 2018. This Property would expand Croy Redwoods to a total of 192 acres, while protecting the Croy Creek watershed. The Valley Greenprint identifies the Property as having high conservation values, especially in terms of biodiversity, water resources, and recreation potential. The Countywide Trails Master Plan includes a proposed route that runs through the Property that would connect the Alec Canyon Trail in Uvas Canyon County Park east to Uvas Reservoir County Park. County Parks staff has expressed interest in the area and have indicated that they would like to partner with the Authority in the future to implement this trail connection once the few remaining properties have been secured along this trail corridor. Acquisition of this Property would contribute to the protection of the Uvas Creek Watershed, maintain important natural habitat, and provide an important opportunity to implement the Countywide Trails Master Plan. In the near term, the Property would provide unique opportunities for docent-led access for visitors to enjoy redwoods, a unique experience among Authority-held properties.

Expenditure Overview

Fiscal Years	Funder	Funding Source	Amount
FY 2015-2022	Open Space Authority	Measure Q Parcel Tax	
FY 2015-2022	Open Space Authority	Measure T Parcel Tax	
FY 2022-2023	Open Space Authority	Measure Q Parcel Tax	
FY 2022-2023	Open Space Authority	Measure T Parcel Tax	\$15,955
PROJECT TOTAL COST			\$15,955

FY 2022/2023 Expenditure Breakdown

Expense Category	MQ Amount	MT Amount
Payroll and Benefits		\$8,611
Supplies and Consumables		\$8
Outside Services		\$3,205
Other Services and Fees		\$4,132
Equipment and Maintenance		
Facilities and Utilities		
Acquisitions		
TOTAL FOR FISCAL YEAR 2022/2023		\$15,955

Outside Services include: Site Assessment; Legal Services

Note: Information on the types of expenditures that may be classified into each expense category can be found on page 9 of this report.



EXPENDITURE PLAN CATEGORY #2

(for printing purposes – this page intentionally left blank)

Coyote Ridge Grazing Improvements and Habitat Improvements

EPC #2

Project Number
P-000158

Program Resource Management

Status
Completed

Project Description

Implementation of grazing infrastructure and habitat improvements across 4,160 acres at Coyote Ridge that includes the Authority’s Preserve as well as Santa Clara Valley Water District (SCVWD) and Valley Transportation Authority (VTA) lands. Conservation grazing on Coyote Ridge focuses on reducing the severity and extent of invasive species; enhancing the ecosystem health of grasslands, promoting native plant species, and maintaining habitat for native grassland species and other threatened species such as the Bay checkerspot butterfly. This project is funded by the Central Valley Project Conservation Program and Central Valley Project Improvement Act Habitat Restoration Program, the Valley Habitat Agency (VHA), VTA, and SCVWD, and is being implemented in partnership with the VHA. This project will support grazing efforts and enhance 45 acres of wetlands, riparian corridors, and adjacent upland habitat by installing exclusion fencing, replacement of aging pasture and boundary fences, and installing/replacing springs and troughs.

Expenditure Overview

Fiscal Years	Funder	Funding Source	Amount
FY 2015-2022	Open Space Authority	Measure Q Parcel Tax	\$41,762
FY 2015-2022	Open Space Authority	Measure T Parcel Tax	\$82,663
FY 2015-2022	Bureau of Reclamation	Bureau of Reclamation	\$225,910
FY 2015-2022	US Dept of Fish and Wildlife	US Dept of Fish and Wildlife	\$567,698
FY 2015-2022	Santa Clara Valley Habitat Agency	Santa Clara Valley Habitat Agency	\$4,950
FY 2015-2022	Valley Water	Valley Water	\$167,050
FY 2015-2022	Santa Clara Valley Transportation Authority	Santa Clara Valley Transportation Authority	\$122,657
FY 2022-2023	Open Space Authority	Measure Q Parcel Tax	
FY 2022-2023	Open Space Authority	Measure T Parcel Tax	\$15,342
FY 2022-2023	US Dept of Fish and Wildlife	US Dept of Fish and Wildlife	\$105,644
PROJECT TOTAL COST			\$1,211,019

FY 2022/2023 Expenditure Breakdown

Expense Category	MQ Amount	MT Amount
Payroll and Benefits		\$1,916
Supplies and Consumables		\$7
Outside Services		\$13,420
Other Services and Fees		
Equipment and Maintenance		
Facilities and Utilities		
Acquisitions		
TOTAL FOR FISCAL YEAR 2022/2023		\$15,342

Outside Services include: Engineering Services; Legal Services *Note: Information on the types of expenditures that may be classified into each expense category can be found on page 9 of this report.*

EPC #2

Blair Ranch Pond Habitat Enhancement (RC-07 & RC-10)

Project
Number
P-000227

Project Description

Enhance and restore at-risk breeding pond habitats to protect California red-legged frogs and enhance climate resiliency at Rancho Cañada del Oro Open Space Preserve

Project still needs permit finalized. Project will resume upon hire of a Watershed Restoration Specialist.

Program
Resource
Management

Expenditure Overview

Status
In Progress -
Delayed

Fiscal Years	Funder	Funding Source	Amount
FY 2015-2022	Open Space Authority	Measure Q Parcel Tax	\$216,368
FY 2015-2022	Open Space Authority	Measure T Parcel Tax	\$53,798
FY 2015-2022	Valley Water	2020 Safe, Clean Water Project D3 Grant Agreement	\$15,000
FY 2022-2023	Open Space Authority	Measure Q Parcel Tax	
FY 2022-2023	Open Space Authority	Measure T Parcel Tax	\$19,612
PROJECT TOTAL COST			\$304,778

FY 2022/2023 Expenditure Breakdown

Expense Category	MQ Amount	MT Amount
Payroll and Benefits		\$4,769
Supplies and Consumables		
Outside Services		\$14,844
Other Services and Fees		
Equipment and Maintenance		
Facilities and Utilities		
Acquisitions		
TOTAL FOR FISCAL YEAR 2022/2023		\$19,612

Outside Services include: Engineering Services; Resources Assessment; Wildlife Management

Note: Information on the types of expenditures that may be classified into each expense category can be found on page 9 of this report.

EPC #2

Pajaro River Riparian Restoration

Project
Number
P-000251

Program
Resource
Management

Status
In Progress -
Delayed

Project Description

Restore stream habitat by reshaping stream bank, removing invasive species, and planting climate-smart riparian species along .75-mile of the Pajaro River on the Pajaro River Agricultural Preserve South Property to benefit wildlife habitat and water quality. Partner with Point Blue Conservation Science’s Students and Teachers Restoring a Watershed (STRAW) program to provide outdoor environmental education opportunities for school kids.

Staff is working with Valley Habitat Agency and Valley Water regarding the details of a conservation easement. Extreme weather delayed some plantings and construction of bank improvements until next fiscal year.

Expenditure Overview

Fiscal Years	Funder	Funding Source	Amount
FY 2015-2022	Open Space Authority	Measure Q Parcel Tax	\$14,103
FY 2015-2022	Open Space Authority	Measure T Parcel Tax	\$23,299
FY 2022-2023	Open Space Authority	Measure Q Parcel Tax	
FY 2022-2023	Open Space Authority	Measure T Parcel Tax	\$8,474
PROJECT TOTAL COST			\$45,876

FY 2022/2023 Expenditure Breakdown

Expense Category	MQ Amount	MT Amount
Payroll and Benefits		\$8,474
Supplies and Consumables		
Outside Services		
Other Services and Fees		
Equipment and Maintenance		
Facilities and Utilities		
Acquisitions		
TOTAL FOR FISCAL YEAR 2022/2023		\$8,474

Outside Services include:

Note: Information on the types of expenditures that may be classified into each expense category can be found on page 9 of this report.

Fisher Creek Riparian Habitat Restoration

Project
Number
P-000269

Program
Resource
Management

Status
Completed

Project Description

The Fisher Creek Riparian Habitat Restoration Project would restore riparian vegetation along 3,100-feet of Fisher Creek at Fisher's Bend Preserve. Riparian woodlands are some of the most important habitats for terrestrial birds and mammals. The riparian corridor is an important component of the wildlife movement pathway within and through Coyote Valley, connecting patches of habitat that have been fragmented due to development in the region. Riparian areas are carbon sinks with a high capacity to store carbon.

In addition to the climatic, water quality, and wildlife habitat and connectivity benefits, this project connects communities to the lands around them. Restoration work would be completed in partnership with Point Blue Conservation Science's Students and Teachers Restoring a Watershed (STRAW) program. The STRAW program engages K-12 students, community members, and Conservation Corps members in climate-smart restoration. Environmental education will continue beyond the implementation of this project through interpretive signs and training for Authority staff and docents.

Expenditure Overview

Fiscal Years	Funder	Funding Source	Amount
FY 2015-2022	Open Space Authority	Measure Q Parcel Tax	\$23,557
FY 2015-2022	Open Space Authority	Measure T Parcel Tax	\$10,261
FY 2015-2022	CA Regional Water Quality Control Board San Francisco Bay Region	Supplemental Environmental Project Monterey Mushrooms, Inc.	\$277,461
FY 2022-2023	Open Space Authority	Measure Q Parcel Tax	
FY 2022-2023	Open Space Authority	Measure T Parcel Tax	\$5,533
FY 2022-2023	CA Regional Water Quality Control Board San Francisco Bay Region	Supplemental Environmental Project Monterey Mushrooms, Inc.	\$119,133
PROJECT TOTAL COST			\$435,945

FY 2022/2023 Expenditure Breakdown

Expense Category	MQ Amount	MT Amount
Payroll and Benefits		\$5,319
Supplies and Consumables		
Outside Services		\$215
Other Services and Fees		
Equipment and Maintenance		
Facilities and Utilities		
Acquisitions		
TOTAL FOR FISCAL YEAR 2022/2023		\$5,533

Outside Services include: Legal Services

Note: Information on the types of expenditures that may be classified into each expense category can be found on page 9 of this report.

EPC #2

Spreckles Wetland Enhancement Project

Project
Number
P-000307

Program
Resource
Management

Status
In Progress -
Delayed

Project Description

The goal of the Spreckles Wetland Cleanup and Enhancement Project is to enhance habitat within Spreckles Wetland through the removal of trash, debris and invasive plant species; to enhance habitat through modification of the culvert to allow for water to spread out more extensively and increase the size of, and variability in water depth within, the wetland; and to monitor the results of these enhancements on native flora and fauna.

The weir installation was delayed due to site conditions. We have since received the parts and permits, and conditions are improving to schedule work. The fence was delayed due to site conditions but conditions are improving, and the task will be complete.

Expenditure Overview

Fiscal Years	Funder	Funding Source	Amount
FY 2015-2022	Open Space Authority	Measure Q Parcel Tax	\$317
FY 2015-2022	Open Space Authority	Measure T Parcel Tax	\$10,205
FY 2015-2022	Bonneville Environmental Foundation	Grant	\$79,442
FY 2022-2023	Open Space Authority	Measure Q Parcel Tax	
FY 2022-2023	Open Space Authority	Measure T Parcel Tax	\$3,510
FY 2022-2023	Bonneville Environmental Foundation	Grant	\$3,663
PROJECT TOTAL COST			\$97,137

FY 2022/2023 Expenditure Breakdown

Expense Category	MQ Amount	MT Amount
Payroll and Benefits		\$3,416
Supplies and Consumables		\$94
Outside Services		
Other Services and Fees		
Equipment and Maintenance		
Facilities and Utilities		
Acquisitions		
TOTAL FOR FISCAL YEAR 2022/2023		\$3,510

Outside Services include:

Note: Information on the types of expenditures that may be classified into each expense category can be found on page 9 of this report.

EPC #2

Fisher Creek Riparian Restoration (BEF Funded)

Project
Number
P-000308

Project Description

Restore riparian habitat and fence 100-foot buffer along the creek.

Maintenance and monitoring has been initiated: this task will continue into next fiscal year.

Minor adjustments to irrigation system remain, pending PG&E availability for electrical hookup.

Program
Resource
Management

Expenditure Overview

Fiscal Years	Funder	Funding Source	Amount
FY 2015-2022	Open Space Authority	Measure Q Parcel Tax	\$214
FY 2015-2022	Open Space Authority	Measure T Parcel Tax	\$2,521
FY 2015-2022	Bonneville Environmental Foundation	Grant	\$19,643
FY 2022-2023	Open Space Authority	Measure Q Parcel Tax	
FY 2022-2023	Open Space Authority	Measure T Parcel Tax	\$7,439
FY 2022-2023	Bonneville Environmental Foundation	Grant	\$47,800
PROJECT TOTAL COST			\$77,616

Status
In Progress -
On Track

FY 2022/2023 Expenditure Breakdown

Expense Category	MQ Amount	MT Amount
Payroll and Benefits		\$7,149
Supplies and Consumables		\$9
Outside Services		\$281
Other Services and Fees		
Equipment and Maintenance		
Facilities and Utilities		
Acquisitions		
TOTAL FOR FISCAL YEAR 2022/2023		\$7,439

Outside Services include: Legal Services

Note: Information on the types of expenditures that may be classified into each expense category can be found on page 9 of this report.

Fisher Creek Riparian Habitat Restoration (NFWF-Funded)

EPC #2

Project Number
P-000343

Program Resource Management

Status
In Progress - Delayed

Project Description

Phase II of this project would build on the success of Phase I and target two additional locations along the bank of Fisher Creek for restoration, which includes removal of invasive plants, planting native species, and engaging with youth and community members.

Started contracting with Pt Blue but the implementation work has yet to begin.

Expenditure Overview

Fiscal Years	Funder	Funding Source	Amount
FY 2015-2022	Open Space Authority	Measure Q Parcel Tax	
FY 2015-2022	Open Space Authority	Measure T Parcel Tax	\$325
FY 2022-2023	Open Space Authority	Measure Q Parcel Tax	
FY 2022-2023	Open Space Authority	Measure T Parcel Tax	\$4,559
PROJECT TOTAL COST			\$4,884

FY 2022/2023 Expenditure Breakdown

Expense Category	MQ Amount	MT Amount
Payroll and Benefits		\$2,090
Supplies and Consumables		
Outside Services		\$2,470
Other Services and Fees		
Equipment and Maintenance		
Facilities and Utilities		
Acquisitions		
TOTAL FOR FISCAL YEAR 2022/2023		\$4,559

Outside Services include: Legal Services

Note: Information on the types of expenditures that may be classified into each expense category can be found on page 9 of this report.

Llagas Creek and Pajaro River Confluence Restoration Project

EPC #2

Project Number
P-000344

Program
Resource Management

Status
In Progress - On Track

Project Description

The Project will plan and design an implementation project to enhance habitat conditions along lower Llagas Creek and the Pajaro River in collaboration with regional species conservation, land use, water quality, and flood protection priorities. The goals of the Project are to plan and design a project that will: (1) improve aquatic habitat and water quality along a mile of two major waterways; (2) create up to approximately 30 acres of floodplain and riparian wetland habitat; (3) maintain floodplain-compatible and regionally valuable agricultural land uses; (4) engage partners and the community in restoration; and (5) contribute to downstream water quality improvement and flood risk reduction.

Expenditure Overview

Fiscal Years	Funder	Funding Source	Amount
FY 2015-2022	Open Space Authority	Measure Q Parcel Tax	
FY 2015-2022	Open Space Authority	Measure T Parcel Tax	
FY 2022-2023	Open Space Authority	Measure Q Parcel Tax	
FY 2022-2023	Open Space Authority	Measure T Parcel Tax	\$14,780
PROJECT TOTAL COST			\$14,780

FY 2022/2023 Expenditure Breakdown

Expense Category	MQ Amount	MT Amount
Payroll and Benefits		\$2,978
Supplies and Consumables		
Outside Services		\$11,802
Other Services and Fees		
Equipment and Maintenance		
Facilities and Utilities		
Acquisitions		
TOTAL FOR FISCAL YEAR 2022/2023		\$14,780

Outside Services include: Site Monitoring

Note: Information on the types of expenditures that may be classified into each expense category can be found on page 9 of this report.



EXPENDITURE PLAN CATEGORY #3

(for printing purposes – this page intentionally left blank)

Project
Number
P-000028

Program
Capital
Improvement

Status
In Progress -
On Track

Project Description

This project will utilize existing inventory reports and studies that have been prepared to date to prepare conceptual design alternatives for a central staging area and limited phase-one trail that will allow public access to the property by 2019. This plan will be part of a long-term master plan that encompasses phases of future trail connections for additional self-guided access and environmental interpretative and education stations that share the importance of this preserve within the region and the connectivity that it provides for people and wildlife. Public access to the Preserve will provide opportunities for recreation access to this area, including extending the Bay Area Ridge Trail from Joseph Grant County Park in the north to Anderson Lake County Park in the south. Construction is nearing completion. Preserve to open in August 2023.

Expenditure Overview

Fiscal Years	Funder	Funding Source	Amount
FY 2015-2022	Open Space Authority	Measure Q Parcel Tax	\$934,599
FY 2015-2022	Open Space Authority	Measure T Parcel Tax	
FY 2015-2022	Gordon and Betty Moore Foundation	Grant	\$285,804
FY 2015-2022	Metropolitan Transportation Commission	Priority Conservation Area Grant Program	\$75,000
FY 2015-2022	CA Dept of Parks and Recreation	2018 Park Bond Act RIRE	\$185,427
FY 2022-2023	Open Space Authority	Measure Q Parcel Tax	\$1,105,143
FY 2022-2023	Open Space Authority	Measure T Parcel Tax	
FY 2022-2023	Gordon and Betty Moore Foundation	Grant	\$114,196
FY 2022-2023	Metropolitan Transportation Commission	Priority Conservation Area Grant Program	\$325,000
FY 2022-2023	CA Dept of Parks and Recreation	2018 Park Bond Act RIRE	\$2,001,186
PROJECT TOTAL COST			\$5,026,354

FY 2022/2023 Expenditure Breakdown

Expense Category	MQ Amount	MT Amount
Payroll and Benefits	\$367,980	
Supplies and Consumables	\$13,457	
Outside Services	\$718,234	
Other Services and Fees	\$3,720	
Equipment and Maintenance	\$1,751	
Facilities and Utilities		
Acquisitions		
TOTAL FOR FISCAL YEAR 2022/2023	\$1,105,143	

Outside Services include: Construction; Prime Design; Prime Engineering; Stie Monitoring; Legal Services; Environmental Planning/CEQA; Design and Content

Note: Information on the types of expenditures that may be classified into each expense category can be found on page 9 of this report.

Coyote Valley Open Space Preserve Improved North Meadow Public Access

EPC #3

Project Number
P-000032

Program
Capital Improvement

Status
In Progress - On Track

Project Description

In 2010, the Authority established the 348-acre Coyote Valley Open Space Preserve. The Preserve was opened to the public on June 27, 2015 with public access improvements that included vehicle and equestrian parking areas, picnic areas, restroom facility and a 4 mile multi-use trail. This project will provide an ADA accessible trail and public amenity areas along the Heart's Delight Trail in the North Meadow.

Phase 2 archeological surveys complete. CEQA Initial Study underway.

Expenditure Overview

Fiscal Years	Funder	Funding Source	Amount
FY 2015-2022	Open Space Authority	Measure Q Parcel Tax	\$232,214
FY 2015-2022	Open Space Authority	Measure T Parcel Tax	
FY 2015-2022	Valley Water	Safe, Clean Wate and Natural Flood Protection Program	\$40,000
FY 2022-2023	Open Space Authority	Measure Q Parcel Tax	\$123,648
FY 2022-2023	Open Space Authority	Measure T Parcel Tax	
PROJECT TOTAL COST			\$395,861

FY 2022/2023 Expenditure Breakdown

Expense Category	MQ Amount	MT Amount
Payroll and Benefits	\$21,038	
Supplies and Consumables		
Outside Services	\$102,610	
Other Services and Fees		
Equipment and Maintenance		
Facilities and Utilities		
Acquisitions		
TOTAL FOR FISCAL YEAR 2022/2023	\$123,648	

Outside Services include: Environmental Planning/CEQA; Surveys and Investigations; Prime Design

Note: Information on the types of expenditures that may be classified into each expense category can be found on page 9 of this report.

Coyote Valley Open Space Preserve Equestrian Lot Improvements

EPC #3

Project Number
P-000035

Program
Capital Improvement

Status
In Progress - Delayed

Project Description

Resolve seasonal drainage issues at Coyote Valley Open Space Preserve's equestrian parking lot surfacing to ensure year-round access for visitors.

Project delayed due to materials price increases. Field Operations will take over project next fiscal year.

Expenditure Overview

Fiscal Years	Funder	Funding Source	Amount
FY 2015-2022	Open Space Authority	Measure Q Parcel Tax	
FY 2015-2022	Open Space Authority	Measure T Parcel Tax	\$1,433
FY 2022-2023	Open Space Authority	Measure Q Parcel Tax	
FY 2022-2023	Open Space Authority	Measure T Parcel Tax	\$683
PROJECT TOTAL COST			\$2,116

FY 2022/2023 Expenditure Breakdown

Expense Category	MQ Amount	MT Amount
Payroll and Benefits		\$683
Supplies and Consumables		
Outside Services		
Other Services and Fees		
Equipment and Maintenance		
Facilities and Utilities		
Acquisitions		
TOTAL FOR FISCAL YEAR 2022/2023		\$683

Outside Services include:

Note: Information on the types of expenditures that may be classified into each expense category can be found on page 9 of this report.

Rancho Cañada del Oro Llagas Creek Bridge and Day Use Area

EPC #3

Project Number
P-000036

Program
Capital Improvement

Status
In Progress - On Track

Project Description

Development of a plan for a new ADA accessible interpretative day-use-area accessed via a pedestrian bridge crossing over Llagas Creek. Enhance public event and operational access to Blair Ranch area within the Rancho Cañada del Oro Open Space Preserve.

Bridge fabrication underway. Construction general contract executed. Construction will begin in August 2023.

Expenditure Overview

Fiscal Years	Funder	Funding Source	Amount
FY 2015-2022	Open Space Authority	Measure Q Parcel Tax	\$260,334
FY 2015-2022	Open Space Authority	Measure T Parcel Tax	
FY 2015-2022	CA Natural Resources Agency	2018 Parks Bond Act Per Capita Grant Program	\$139,346
FY 2022-2023	Open Space Authority	Measure Q Parcel Tax	\$39,257
FY 2022-2023	Open Space Authority	Measure T Parcel Tax	
FY 2022-2023	CA Natural Resources Agency	2018 Parks Bond Act Per Capita Grant Program	\$95,511
PROJECT TOTAL COST			\$299,591

FY 2022/2023 Expenditure Breakdown

Expense Category	MQ Amount	MT Amount
Payroll and Benefits	\$36,518	
Supplies and Consumables	\$14	
Outside Services	\$2,007	
Other Services and Fees	\$717	
Equipment and Maintenance		
Facilities and Utilities		
Acquisitions		
TOTAL FOR FISCAL YEAR 2022/2023	\$39,257	

Outside Services include: Legal Services

Note: Information on the types of expenditures that may be classified into each expense category can be found on page 9 of this report.

Coyote Valley Open Space Preserve Operations & Maintenance

EPC #3

Project Number
P-000087

Program
Operations

Status
Ongoing

Project Description

The daily operation, management and stewardship of the Authority’s lands and public access facilities includes trail and preserve maintenance, resource management such as grazing management, invasive plant management, site monitoring, resource and habitat enhancement, monitoring and maintaining capital structures, and careful stewardship and reporting for contract land management and mitigation.

Coyote Valley Open Space Preserve is located at the western edge of the Coyote Valley, which provides a greenbelt between San Jose and Morgan Hill. While only 20 miles from downtown San Jose, this 348-acre preserve offers a true rural and wilderness experience.

Coyote Valley Open Space Preserve is open to the public, with over 45,000 visitors annually. The following amenities are managed and maintained by the Authority:

- 4 miles of trail
- Staging area
- Picnic tables
- Park benches
- Restrooms
- Equestrian Lot

Expenditure Overview

Fiscal Years	Funder	Funding Source	Amount
FY 2015-2022	Open Space Authority	Measure Q Parcel Tax	\$568,256
FY 2015-2022	Open Space Authority	Measure T Parcel Tax	\$276,386
FY 2022-2023	Open Space Authority	Measure Q Parcel Tax	
FY 2022-2023	Open Space Authority	Measure T Parcel Tax	\$268,420
PROJECT TOTAL COST			\$1,113,062

FY 2022/2023 Expenditure Breakdown

Expense Category	MQ Amount	MT Amount
Payroll and Benefits		\$173,749
Supplies and Consumables		\$56,081
Outside Services		\$6,904
Other Services and Fees		\$1,653
Equipment and Maintenance		\$18,352
Facilities and Utilities		\$11,681
Acquisitions		
TOTAL FOR FISCAL YEAR 2022/2023		\$268,420

Outside Services include: Grazing Programs; Mapping & GIS Services; Public Access/ Facilities Maintenance; Legal Services; Wildlife Management

Note: Information on the types of expenditures that may be classified into each expense category can be found on page 9 of this report.

Sierra Vista Open Space Preserve Operations & Maintenance

EPC #3

Project Number
P-000088

Program
Operations

Status
Ongoing

Project Description

The daily operation, management and stewardship of the Authority’s lands and public access facilities includes trail and preserve maintenance, resource management such as grazing management, invasive plant management, site monitoring, resource and habitat enhancement, monitoring and maintaining capital structures, and careful stewardship and reporting for contract land management and mitigation.

This 1,611-acre preserve in the Eastern foothills of Santa Clara County offers sweeping views of the Valley and the opportunity to stroll through diverse landscapes including oak woodlands, rolling grassland, and chaparral communities. Perched above Alum Rock Park, the area provides watershed protection for Penitencia Creek and is home to a number of protected wildlife species including the California red-legged frog, California tiger salamander, American badger, and Western burrowing owl and other species such as golden eagle, mountain lion, bobcat, and gray fox.

Sierra Vista Open Space Preserve is open to the public, with over 100,000 visitors annually. The following amenities are managed and maintained by the Authority:

- 11.5 miles of trail
- Staging area
- Picnic tables
- Park benches
- Equestrian Lot

Expenditure Overview

Fiscal Years	Funder	Funding Source	Amount
FY 2015-2022	Open Space Authority	Measure Q Parcel Tax	\$1,707,772
FY 2015-2022	Open Space Authority	Measure T Parcel Tax	\$770,928
FY 2022-2023	Open Space Authority	Measure Q Parcel Tax	
FY 2022-2023	Open Space Authority	Measure T Parcel Tax	\$718,944
PROJECT TOTAL COST			\$3,185,163

FY 2022/2023 Expenditure Breakdown

Expense Category	MQ Amount	MT Amount
Payroll and Benefits		\$573,770
Supplies and Consumables		\$79,311
Outside Services		\$19,706
Other Services and Fees		
Equipment and Maintenance		\$42,284
Facilities and Utilities		\$3,873
Acquisitions		
TOTAL FOR FISCAL YEAR 2022/2023		\$718,944

Outside Services include: Public Access/ Facilities Maint; Grazing Programs; Mapping & GIS Services; IPM/ Pest Control

Note: Information on the types of expenditures that may be classified into each expense category can be found on page 9 of this report.

Coyote Ridge Open Space Preserve Operations & Maintenance

EPC #3

Project Number
P-000089

Program
Operations

Status
Ongoing

Project Description

The daily operation, management and stewardship of the Authority's lands and public access facilities includes trail and preserve maintenance, resource management such as grazing management, invasive plant management, site monitoring, resource and habitat enhancement, monitoring and maintaining capital structures, and careful stewardship and reporting for contract land management and mitigation.

The Coyote Ridge property is located in the Diablo Range foothills east of Hwy 101 in southern Santa Clara County. The 1,859-acre property boasts rare serpentine grassland, which is vital to the threatened Bay checkerspot butterfly and Metcalf Canyon jewelflower, and provides critical habitat for the California red-legged frog, California tiger salamander, Tule elk, Western burrowing owls, golden eagles, and many other raptors.

Coyote Ridge Open Space Preserve offers docent-led hikes.

Expenditure Overview

Fiscal Years	Funder	Funding Source	Amount
FY 2015-2022	Open Space Authority	Measure Q Parcel Tax	\$132,209
FY 2015-2022	Open Space Authority	Measure T Parcel Tax	\$59,643
FY 2022-2023	Open Space Authority	Measure Q Parcel Tax	
FY 2022-2023	Open Space Authority	Measure T Parcel Tax	\$80,525
PROJECT TOTAL COST			\$272,377

FY 2022/2023 Expenditure Breakdown

Expense Category	MQ Amount	MT Amount
Payroll and Benefits		\$49,246
Supplies and Consumables		\$17,147
Outside Services		\$11,570
Other Services and Fees		
Equipment and Maintenance		\$2,321
Facilities and Utilities		\$240
Acquisitions		
TOTAL FOR FISCAL YEAR 2022/2023		\$80,525

Outside Services include: Public Access/ Facilities Maint; Photography & Video; Site Monitoring; Wildlife Management

Note: Information on the types of expenditures that may be classified into each expense category can be found on page 9 of this report.

Rancho Cañada del Oro Open Space Preserve Operations & Maintenance

EPC #3

Project Number
P-000090

Program
Operations

Status
Ongoing

Project Description

The daily operation, management and stewardship of the Authority's lands and public access facilities includes trail and preserve maintenance, resource management such as grazing management, invasive plant management, site monitoring, resource and habitat enhancement, monitoring and maintaining capital structures, and careful stewardship and reporting for contract land management and mitigation.

Rancho Cañada del Oro Open Space Preserve is in the foothills of the Santa Cruz Mountains in South Santa Clara County. A glistening creek runs along the Llagas Meadow and deer, bobcat, mountain lions, and other wildlife roam throughout the 4,774-acre preserve. In the spring months, wildflowers adorn the meadow and hillsides.

The preserve is open to the public, with over 35,000 visitors annually. The following amenities are managed and maintained by the Authority:

- 8.3 miles of trail
- Staging area
- Picnic tables
- Park benches
- Restrooms
- Equestrian Lot
- Overflow Parking Lot

Expenditure Overview

Fiscal Years	Funder	Funding Source	Amount
FY 2015-2022	Open Space Authority	Measure Q Parcel Tax	\$1,129,017
FY 2015-2022	Open Space Authority	Measure T Parcel Tax	\$281,543
FY 2022-2023	Open Space Authority	Measure Q Parcel Tax	
FY 2022-2023	Open Space Authority	Measure T Parcel Tax	\$244,737
PROJECT TOTAL COST			\$1,655,297

FY 2022/2023 Expenditure Breakdown

Expense Category	MQ Amount	MT Amount
Payroll and Benefits		\$170,057
Supplies and Consumables		\$44,582
Outside Services		\$11,524
Other Services and Fees		\$264
Equipment and Maintenance		\$15,126
Facilities and Utilities		\$3,184
Acquisitions		
TOTAL FOR FISCAL YEAR 2022/2023		\$244,737

Outside Services include: Legal Services; Grazing Programs; Mapping & GIS Services; IPM/Pest Control

Note: Information on the types of expenditures that may be classified into each expense category can be found on page 9 of this report.

Diablo Foothills Open Space Preserve Operations & Maintenance

EPC #3

Project Number
P-000091

Program
Operations

Status
Ongoing

Project Description

The daily operation, management and stewardship of the Authority's lands and public access facilities includes trail and preserve maintenance, resource management such as grazing management, invasive plant management, site monitoring, resource and habitat enhancement, monitoring and maintaining capital structures, and careful stewardship and reporting for contract land management and mitigation.

This 819-acre preserve has a half acre pond and several creeks that are part of the primary watershed for the Pajaro River, which flows toward Monterey Bay. The preserve also offers habitat for California red-legged frogs and California tiger salamanders, and features Coast Live Oak and annual grasslands.

Diablo Foothills Open Space Preserve offers docent-led hikes.

Expenditure Overview

Fiscal Years	Funder	Funding Source	Amount
FY 2015-2022	Open Space Authority	Measure Q Parcel Tax	\$163,589
FY 2015-2022	Open Space Authority	Measure T Parcel Tax	\$38,217
FY 2022-2023	Open Space Authority	Measure Q Parcel Tax	
FY 2022-2023	Open Space Authority	Measure T Parcel Tax	\$35,585
PROJECT TOTAL COST			\$237,391

FY 2022/2023 Expenditure Breakdown

Expense Category	MQ Amount	MT Amount
Payroll and Benefits		\$24,428
Supplies and Consumables		\$7,182
Outside Services		\$3,464
Other Services and Fees		
Equipment and Maintenance		\$511
Facilities and Utilities		
Acquisitions		
TOTAL FOR FISCAL YEAR 2022/2023		\$35,585

Outside Services include: Grazing Programs

Note: Information on the types of expenditures that may be classified into each expense category can be found on page 9 of this report.

Little Uvas Open Space Preserve Operations & Maintenance

EPC #3

Project Number
P-000092

Program
Operations

Status
Ongoing

Project Description

The daily operation, management and stewardship of the Authority's lands and public access facilities includes trail and preserve maintenance, resource management such as grazing management, invasive plant management, site monitoring, resource and habitat enhancement, monitoring and maintaining capital structures, and careful stewardship and reporting for contract land management and mitigation.

Located in the Southern Santa Cruz Mountains, Little Uvas Creek consists primarily of serpentine hardwoods and grasslands, grey pine, and oak woodland. A total of five perennial ponds are located on the 285-acre property.

Little Uvas Open Space Preserve offers docent-led hikes.

Expenditure Overview

Fiscal Years	Funder	Funding Source	Amount
FY 2015-2022	Open Space Authority	Measure Q Parcel Tax	\$36,106
FY 2015-2022	Open Space Authority	Measure T Parcel Tax	\$6,506
FY 2022-2023	Open Space Authority	Measure Q Parcel Tax	
FY 2022-2023	Open Space Authority	Measure T Parcel Tax	\$8,177
PROJECT TOTAL COST			\$50,789

FY 2022/2023 Expenditure Breakdown

Expense Category	MQ Amount	MT Amount
Payroll and Benefits		\$8,117
Supplies and Consumables		\$61
Outside Services		
Other Services and Fees		
Equipment and Maintenance		
Facilities and Utilities		
Acquisitions		
TOTAL FOR FISCAL YEAR 2022/2023		\$8,177

Outside Services include:

Note: Information on the types of expenditures that may be classified into each expense category can be found on page 9 of this report.

Palassou Ridge Open Space Preserve Operations & Maintenance

EPC #3

Project Number
P-000093

Program
Operations

Status
Ongoing

Project Description

The daily operation, management and stewardship of the Authority's lands and public access facilities includes trail and preserve maintenance, resource management such as grazing management, invasive plant management, site monitoring, resource and habitat enhancement, monitoring and maintaining capital structures, and careful stewardship and reporting for contract land management and mitigation.

Palassou Ridge connects Coyote Lake-Harvey Bear Ranch County Park to Henry Coe State Park. This 3,524-acre preserve has deep, wooded canyons and rolling grassy hills as well as important habitat for California red-legged frogs and California tiger salamanders. The property contains a historic stone house and was a campsite for the Anza Expedition.

Palassou Ridge Open Space Preserve offers docent-led hikes.

Expenditure Overview

Fiscal Years	Funder	Funding Source	Amount
FY 2015-2022	Open Space Authority	Measure Q Parcel Tax	\$126,712
FY 2015-2022	Open Space Authority	Measure T Parcel Tax	\$12,535
FY 2022-2023	Open Space Authority	Measure Q Parcel Tax	
FY 2022-2023	Open Space Authority	Measure T Parcel Tax	\$15,574
PROJECT TOTAL COST			\$154,821

FY 2022/2023 Expenditure Breakdown

Expense Category	MQ Amount	MT Amount
Payroll and Benefits		\$11,930
Supplies and Consumables		\$819
Outside Services		
Other Services and Fees		
Equipment and Maintenance		\$2,805
Facilities and Utilities		\$20
Acquisitions		
TOTAL FOR FISCAL YEAR 2022/2023		\$15,574

Outside Services include:

Note: Information on the types of expenditures that may be classified into each expense category can be found on page 9 of this report.

North Pajaro River Agricultural Preserve Operations & Maintenance

EPC #3

Project Number
P-000095

Program
Operations

Status
Ongoing

Project Description

The daily operation, management and stewardship of the Authority's lands and public access facilities includes trail and preserve maintenance, resource management such as grazing management, invasive plant management, site monitoring, resource and habitat enhancement, monitoring and maintaining capital structures, and careful stewardship and reporting for contract land management and mitigation.

The North Pajaro River Agricultural Preserve contains several historical structures. The 100-acre preserve is in agricultural production and is important to protecting the working lands and agricultural heritage of Santa Clara County. 21 acres of the preserve are in active restoration to provide a natural buffer along wetland areas and enhance native vegetation within a historic flood plain. The Pajaro River is a critical wildlife corridor connecting the Diablo and Santa Cruz Mountains and provides important riparian habitat.

North Pajaro River Agricultural Preserve does not offer public access at this time; however, frequent land stewards events are hosted by the Authority at this Preserve.

Expenditure Overview

Fiscal Years	Funder	Funding Source	Amount
FY 2015-2022	Open Space Authority	Measure Q Parcel Tax	\$201,810
FY 2015-2022	Open Space Authority	Measure T Parcel Tax	\$40,357
FY 2022-2023	Open Space Authority	Measure Q Parcel Tax	
FY 2022-2023	Open Space Authority	Measure T Parcel Tax	\$21,790
PROJECT TOTAL COST			\$263,957

FY 2022/2023 Expenditure Breakdown

Expense Category	MQ Amount	MT Amount
Payroll and Benefits		\$11,004
Supplies and Consumables		\$6,763
Outside Services		\$814
Other Services and Fees		
Equipment and Maintenance		\$3,207
Facilities and Utilities		
Acquisitions		
TOTAL FOR FISCAL YEAR 2022/2023		\$21,790

Outside Services include: Photography & Video

Note: Information on the types of expenditures that may be classified into each expense category can be found on page 9 of this report.

Santa Teresa Foothills Open Space Preserve Operations & Maintenance

EPC #3

Project Number
P-000096

Program
Operations

Status
Ongoing

Project Description

The daily operation, management and stewardship of the Authority's lands and public access facilities includes trail and preserve maintenance, resource management such as grazing management, invasive plant management, site monitoring, resource and habitat enhancement, monitoring and maintaining capital structures, and careful stewardship and reporting for contract land management and mitigation.

Located on Santa Teresa Ridge in San Jose's Santa Teresa neighborhood, this 61-acre area is a gateway to 1,500 acres of open space land. It provides sweeping views across the Almaden Valley to downtown San Jose and the Mt. Hamilton Range.

Santa Teresa Foothills Open Space Preserve does not offer public access at this time.

Expenditure Overview

Fiscal Years	Funder	Funding Source	Amount
FY 2015-2022	Open Space Authority	Measure Q Parcel Tax	\$45,787
FY 2015-2022	Open Space Authority	Measure T Parcel Tax	\$4,216
FY 2022-2023	Open Space Authority	Measure Q Parcel Tax	
FY 2022-2023	Open Space Authority	Measure T Parcel Tax	\$5,816
PROJECT TOTAL COST			\$55,819

FY 2022/2023 Expenditure Breakdown

Expense Category	MQ Amount	MT Amount
Payroll and Benefits		\$5,755
Supplies and Consumables		\$61
Outside Services		
Other Services and Fees		
Equipment and Maintenance		
Facilities and Utilities		
Acquisitions		
TOTAL FOR FISCAL YEAR 2022/2023		\$5,816

Outside Services include:

Note: Information on the types of expenditures that may be classified into each expense category can be found on page 9 of this report.

Upper Uvas Open Space Preserve Operations & Maintenance

EPC #3

Project Number
P-000097

Program
Operations

Status
Ongoing

Project Description

The daily operation, management and stewardship of the Authority's lands and public access facilities includes trail and preserve maintenance, resource management such as grazing management, invasive plant management, site monitoring, resource and habitat enhancement, monitoring and maintaining capital structures, and careful stewardship and reporting for contract land management and mitigation.

Part of the Santa Cruz Mountains, the headwaters of Uvas Creek drain through the mountain's slopes, providing high-quality aquatic habitat and water supply. Douglas fir and Gray pines are also found on this 1,253-acre rugged terrain.

Upper Uvas Open Space Preserve does not offer public access at this time.

Expenditure Overview

Fiscal Years	Funder	Funding Source	Amount
FY 2015-2022	Open Space Authority	Measure Q Parcel Tax	\$24,868
FY 2015-2022	Open Space Authority	Measure T Parcel Tax	\$2,974
FY 2022-2023	Open Space Authority	Measure Q Parcel Tax	
FY 2022-2023	Open Space Authority	Measure T Parcel Tax	\$2,858
PROJECT TOTAL COST			\$30,700

FY 2022/2023 Expenditure Breakdown

Expense Category	MQ Amount	MT Amount
Payroll and Benefits		\$2,797
Supplies and Consumables		\$61
Outside Services		
Other Services and Fees		
Equipment and Maintenance		
Facilities and Utilities		
Acquisitions		
TOTAL FOR FISCAL YEAR 2022/2023		\$2,858

Outside Services include:

Note: Information on the types of expenditures that may be classified into each expense category can be found on page 9 of this report.

Mount Chual Open Space Preserve Operations & Maintenance

EPC #3

Project Number
P-000098

Program
Operations

Status
Ongoing

Project Description

The daily operation, management and stewardship of the Authority's lands and public access facilities includes trail and preserve maintenance, resource management such as grazing management, invasive plant management, site monitoring, resource and habitat enhancement, monitoring and maintaining capital structures, and careful stewardship and reporting for contract land management and mitigation.

As the third highest peak in the Santa Cruz Mountains, this 632-acre preserve has panoramic views of the Diablo Range with chaparral and Bay Laurel plant communities. It also contains the headwaters for Llagas Creek which provides essential water supply and aquatic habitat for fish and amphibians.

Mount Chual Open Space Preserve does not offer public access at this time.

Expenditure Overview

Fiscal Years	Funder	Funding Source	Amount
FY 2015-2022	Open Space Authority	Measure Q Parcel Tax	\$29,671
FY 2015-2022	Open Space Authority	Measure T Parcel Tax	\$5,707
FY 2022-2023	Open Space Authority	Measure Q Parcel Tax	
FY 2022-2023	Open Space Authority	Measure T Parcel Tax	\$3,491
PROJECT TOTAL COST			\$38,869

FY 2022/2023 Expenditure Breakdown

Expense Category	MQ Amount	MT Amount
Payroll and Benefits		\$2,344
Supplies and Consumables		\$46
Outside Services		
Other Services and Fees		
Equipment and Maintenance		\$1,101
Facilities and Utilities		
Acquisitions		
TOTAL FOR FISCAL YEAR 2022/2023		\$3,491

Outside Services include:

Note: Information on the types of expenditures that may be classified into each expense category can be found on page 9 of this report.

EPC #3

El Toro Open Space Preserve Operations & Maintenance

Project
Number
P-000099

Program
Operations

Status
Ongoing

Project Description

The daily operation, management and stewardship of the Authority's lands and public access facilities includes trail and preserve maintenance, resource management such as grazing management, invasive plant management, site monitoring, resource and habitat enhancement, monitoring and maintaining capital structures, and careful stewardship and reporting for contract land management and mitigation.

Nestled above Morgan Hill, in the Santa Cruz Mountains, this 58-acre hillside is home to Coast Live Oak, California bay woodlands, chaparral, and grasslands.

El Toro Open Space Preserve does not offer public access at this time.

Expenditure Overview

Fiscal Years	Funder	Funding Source	Amount
FY 2015-2022	Open Space Authority	Measure Q Parcel Tax	\$71,695
FY 2015-2022	Open Space Authority	Measure T Parcel Tax	\$5,647
FY 2022-2023	Open Space Authority	Measure Q Parcel Tax	
FY 2022-2023	Open Space Authority	Measure T Parcel Tax	\$3,218
PROJECT TOTAL COST			\$80,560

FY 2022/2023 Expenditure Breakdown

Expense Category	MQ Amount	MT Amount
Payroll and Benefits		\$3,172
Supplies and Consumables		\$46
Outside Services		
Other Services and Fees		
Equipment and Maintenance		
Facilities and Utilities		
Acquisitions		
TOTAL FOR FISCAL YEAR 2022/2023		\$3,218

Outside Services include:

Note: Information on the types of expenditures that may be classified into each expense category can be found on page 9 of this report.

Project
Number
P-000202

Program
Operations

Status
Ongoing

Project Description

The daily operation, management and stewardship of the Authority's lands and public access facilities includes trail and preserve maintenance, resource management such as grazing management, invasive plant management, site monitoring, resource and habitat enhancement, monitoring and maintaining capital structures, and careful stewardship and reporting for contract land management and mitigation.

The 184-acre preserve has been in continuous agricultural production since at least 1939 and is important to protecting the working lands and agricultural heritage of Santa Clara County. The Pajaro River is a critical wildlife corridor connecting the Diablo and Santa Cruz Mountains and provides important riparian habitat. 10 acres of the preserve is part of an active restoration to provide a natural buffer from agricultural practices along the north bank of the Pajaro River.

South Pajaro River Agricultural Preserve does not offer public access at this time; however, frequent land stewards events are hosted by the Authority at this Preserve.

Expenditure Overview

Fiscal Years	Funder	Funding Source	Amount
FY 2015-2022	Open Space Authority	Measure Q Parcel Tax	\$17,709
FY 2015-2022	Open Space Authority	Measure T Parcel Tax	\$1,437
FY 2022-2023	Open Space Authority	Measure Q Parcel Tax	
FY 2022-2023	Open Space Authority	Measure T Parcel Tax	\$4,749
PROJECT TOTAL COST			\$23,895

FY 2022/2023 Expenditure Breakdown

Expense Category	MQ Amount	MT Amount
Payroll and Benefits		\$4,363
Supplies and Consumables		\$237
Outside Services		\$149
Other Services and Fees		
Equipment and Maintenance		
Facilities and Utilities		
Acquisitions		
TOTAL FOR FISCAL YEAR 2022/2023		\$4,749

Outside Services include: Legal Services

Note: Information on the types of expenditures that may be classified into each expense category can be found on page 9 of this report.

EPC #3

Interp & Environmental Education Program

Project
Number
P-000247

Project Description

The development, delivery and management of environmental education programs. This program aims to promote the protection of water, wildlife, and working lands through public education about the Authority's adaptive management of natural resources like watersheds, wildlife connectivity, and the protection of endangered species.

Program
Environmental
Education

Expenditure Overview

Status
Ongoing

Fiscal Years	Funder	Funding Source	Amount
FY 2015-2022	Open Space Authority	Measure Q Parcel Tax	\$572,145
FY 2015-2022	Open Space Authority	Measure T Parcel Tax	\$161,715
FY 2022-2023	Open Space Authority	Measure Q Parcel Tax	
FY 2022-2023	Open Space Authority	Measure T Parcel Tax	\$218,725
PROJECT TOTAL COST			\$952,585

FY 2022/2023 Expenditure Breakdown

Expense Category	MQ Amount	MT Amount
Payroll and Benefits		\$215,554
Supplies and Consumables		\$88
Outside Services		\$1,610
Other Services and Fees		\$1,457
Equipment and Maintenance		
Facilities and Utilities		\$16
Acquisitions		
TOTAL FOR FISCAL YEAR 2022/2023		\$218,725

Outside Services include: Community Engagement; Legal Services

Note: Information on the types of expenditures that may be classified into each expense category can be found on page 9 of this report.

EPC #3

Volunteer Program

Project
Number
P-000248

Program
Community
Engagement

Status
Ongoing

Project Description

Volunteer programs, especially those that engage participants in projects on Authority preserve lands, build a deeper understanding of the region's natural systems, build strong relationships between the Authority and the communities where the projects occur, and build a sense of ownership of the resource improvements by the participants who contributed to those improvements. The Monthly Land Stewards Program is designed to augment Authority Field staff capacity by providing intensive work project assistance for priority projects, saving the Authority significant labor costs by achieving work results without hiring additional staff.

Preliminary implementation will include offering one event each month (weather permitting), planned in close coordination with the Authority's Field Operations staff who identify the highest priority needs on Authority lands.

Expenditure Overview

Fiscal Years	Funder	Funding Source	Amount
FY 2015-2022	Open Space Authority	Measure Q Parcel Tax	\$197,933
FY 2015-2022	Open Space Authority	Measure T Parcel Tax	\$94,558
FY 2022-2023	Open Space Authority	Measure Q Parcel Tax	
FY 2022-2023	Open Space Authority	Measure T Parcel Tax	\$98,827
PROJECT TOTAL COST			\$391,318

FY 2022/2023 Expenditure Breakdown

Expense Category	MQ Amount	MT Amount
Payroll and Benefits		\$88,631
Supplies and Consumables		\$3,359
Outside Services		\$286
Other Services and Fees		\$6,550
Equipment and Maintenance		
Facilities and Utilities		
Acquisitions		
TOTAL FOR FISCAL YEAR 2022/2023		\$98,827

Outside Services include: Legal Services

Note: Information on the types of expenditures that may be classified into each expense category can be found on page 9 of this report.

Project
Number
P-000267

Program
Operations

Status
Ongoing

Project Description

The daily operation, management and stewardship of the Authority's lands and public access facilities includes trail and preserve maintenance, resource management such as grazing management, invasive plant management, site monitoring, resource and habitat enhancement, monitoring, and maintaining capital structures.

North Coyote Valley Conservation Area is located in the north west area of Coyote Valley and comprises of the Laguna Seca and upland habitat providing habitat for migratory birds and other wildlife species such as American badger, coyote, bobcat, etc.

North Coyote Valley Conservation Area offers docent-led hikes, land steward events, and public access events.

Expenditure Overview

Fiscal Years	Funder	Funding Source	Amount
FY 2015-2022	Open Space Authority	Measure Q Parcel Tax	\$193,496
FY 2015-2022	Open Space Authority	Measure T Parcel Tax	\$74,333
FY 2022-2023	Open Space Authority	Measure Q Parcel Tax	
FY 2022-2023	Open Space Authority	Measure T Parcel Tax	\$51,221
PROJECT TOTAL COST			\$319,050

FY 2022/2023 Expenditure Breakdown

Expense Category	MQ Amount	MT Amount
Payroll and Benefits		\$37,720
Supplies and Consumables		\$4,962
Outside Services		\$6,703
Other Services and Fees		\$176
Equipment and Maintenance		\$1,658
Facilities and Utilities		
Acquisitions		
TOTAL FOR FISCAL YEAR 2022/2023		\$51,221

Outside Services include: Legal Services; Site Clean-up Remediation; Surveys; Photography & Video

Note: Information on the types of expenditures that may be classified into each expense category can be found on page 9 of this report.

EPC #3

Tulare Meadows Operations & Maintenance

Project
Number
P-000268

Project Description

The daily operation, management and stewardship of the Authority's lands and public access facilities includes trail and preserve maintenance, resource management such as grazing management, invasive plant management, site monitoring, resource and habitat enhancement, monitoring, and maintaining capital structures.

Program
Operations

Tulare Meadows is located in the north east area of Coyote Valley and encompasses an active agricultural operation as well as the maintenance of several structures.

Status
Ongoing

Tulare Meadows offers land steward and public access events.

Expenditure Overview

Fiscal Years	Funder	Funding Source	Amount
FY 2015-2022	Open Space Authority	Measure Q Parcel Tax	\$82,266
FY 2015-2022	Open Space Authority	Measure T Parcel Tax	\$15,316
FY 2022-2023	Open Space Authority	Measure Q Parcel Tax	
FY 2022-2023	Open Space Authority	Measure T Parcel Tax	\$37,371
PROJECT TOTAL COST			\$134,953

FY 2022/2023 Expenditure Breakdown

Expense Category	MQ Amount	MT Amount
Payroll and Benefits		\$26,569
Supplies and Consumables		\$10,064
Outside Services		\$483
Other Services and Fees		
Equipment and Maintenance		\$256
Facilities and Utilities		
Acquisitions		
TOTAL FOR FISCAL YEAR 2022/2023		\$37,371

Outside Services include: Legal Services

Note: Information on the types of expenditures that may be classified into each expense category can be found on page 9 of this report.

Fisher's Bend Agricultural Preserve Operations & Maintenance

EPC #3

Project Number
P-000272

Program Operations

Status Ongoing

Project Description

Fisher's Bend is located in the Mid-Coyote Valley and is currently under an active agriculture operation. A portion of Fisher Creek runs through the property and is actively managed for riparian and wetland restoration.

The Authority currently manages and monitor the agricultural lease, as well as provide routine patrol of the property to address trespass or trash issues.

Fisher's Bend Agricultural Preserve does not offer public access at this time; however, frequent land stewards events are hosted by the Authority at this Preserve.

Expenditure Overview

Fiscal Years	Funder	Funding Source	Amount
FY 2015-2022	Open Space Authority	Measure Q Parcel Tax	\$8,509
FY 2015-2022	Open Space Authority	Measure T Parcel Tax	\$24,823
FY 2022-2023	Open Space Authority	Measure Q Parcel Tax	
FY 2022-2023	Open Space Authority	Measure T Parcel Tax	\$14,806
PROJECT TOTAL COST			\$48,138

FY 2022/2023 Expenditure Breakdown

Expense Category	MQ Amount	MT Amount
Payroll and Benefits		\$14,748
Supplies and Consumables		\$57
Outside Services		
Other Services and Fees		
Equipment and Maintenance		
Facilities and Utilities		
Acquisitions		
TOTAL FOR FISCAL YEAR 2022/2023		\$14,806

Outside Services include:

Note: Information on the types of expenditures that may be classified into each expense category can be found on page 9 of this report.

EPC #3

American Disabilities Act Transition Plan

Project
Number
P-000280

Project Description

Develop an ADA Transition Plan for Authority facilities, programs, and public outreach. Report will provide recommendations for phasing and implementation including compliance with Architectural Barriers Act Accessibility Guidelines.

Program
Long Range
Planning

Expenditure Overview

Fiscal Years	Funder	Funding Source	Amount
FY 2015-2022	Open Space Authority	Measure Q Parcel Tax	\$7,843
FY 2015-2022	Open Space Authority	Measure T Parcel Tax	\$11,348
FY 2022-2023	Open Space Authority	Measure Q Parcel Tax	
FY 2022-2023	Open Space Authority	Measure T Parcel Tax	\$108,929
PROJECT TOTAL COST			\$128,120

Status
In Progress -
On Track

FY 2022/2023 Expenditure Breakdown

Expense Category	MQ Amount	MT Amount
Payroll and Benefits		\$31,065
Supplies and Consumables		
Outside Services		\$77,864
Other Services and Fees		
Equipment and Maintenance		
Facilities and Utilities		
Acquisitions		
TOTAL FOR FISCAL YEAR 2022/2023		\$108,929

Outside Services include: Planning Services; Legal Services

Note: Information on the types of expenditures that may be classified into each expense

EPC #3

Preserve Management System

Project
Number
P-000283

Project Description

Deploy a preserve management system for the Open Space Authority's staging areas, special access areas, and events to provide a one-stop location for visitors to obtain habitat passes, event reservations, and event parking passes

Program
Operations

Project expanded to include Butterfly Pass, event and parking registration processes. RFP has been released and proposals will be reviewed in Aug 2023.

Status
In Progress -
Delayed

Expenditure Overview

Fiscal Years	Funder	Funding Source	Amount
FY 2015-2022	Open Space Authority	Measure Q Parcel Tax	\$3,078
FY 2015-2022	Open Space Authority	Measure T Parcel Tax	\$1,676
FY 2022-2023	Open Space Authority	Measure Q Parcel Tax	
FY 2022-2023	Open Space Authority	Measure T Parcel Tax	\$2,130
PROJECT TOTAL COST			\$6,884

FY 2022/2023 Expenditure Breakdown

Expense Category	MQ Amount	MT Amount
Payroll and Benefits		\$2,130
Supplies and Consumables		
Outside Services		
Other Services and Fees		
Equipment and Maintenance		
Facilities and Utilities		
Acquisitions		
TOTAL FOR FISCAL YEAR 2022/2023		\$2,130

Outside Services include:

Note: Information on the types of expenditures that may be classified into each expense category can be found on page 9 of this report.

EPC #3

COVA Operations and Maintenance

Project
Number
P-000309

Project Description

The daily operation, management and stewardship of the Authority’s lands and public access facilities includes trail and preserve maintenance, resource management such as grazing management, invasive plant management, site monitoring, resource and habitat enhancement, monitoring, and maintaining capital structures.

Program
Operations

This area within the North Coyote Valley Conservation Areas includes everything south of Bailey Avenue and encompasses an active agricultural operation as well as the maintenance of several structures. This area of the valley floor offers land steward and public access events.

Status
Ongoing

Expenditure Overview

Fiscal Years	Funder	Funding Source	Amount
FY 2015-2022	Open Space Authority	Measure Q Parcel Tax	\$3,892
FY 2015-2022	Open Space Authority	Measure T Parcel Tax	\$80,190
FY 2022-2023	Open Space Authority	Measure Q Parcel Tax	
FY 2022-2023	Open Space Authority	Measure T Parcel Tax	\$82,059
PROJECT TOTAL COST			\$166,141

FY 2022/2023 Expenditure Breakdown

Expense Category	MQ Amount	MT Amount
Payroll and Benefits		\$52,347
Supplies and Consumables		\$23,338
Outside Services		\$6,374
Other Services and Fees		
Equipment and Maintenance		
Facilities and Utilities		
Acquisitions		
TOTAL FOR FISCAL YEAR 2022/2023		\$82,059

Outside Services include: Vegetation Management; Legal Services

Note: Information on the types of expenditures that may be classified into each expense category can be found on page 9 of this report.

EPC #3

Monarch Habitat Restoration

Project
Number
P-000336

Project Description

Plan and implement a community-based restoration project to plant native species that benefit the monarch butterfly and other pollinating invertebrates, and compile educational resources to increase pollinator awareness in Coyote Valley.

Program
Resource
Management

Expenditure Overview

Fiscal Years	Funder	Funding Source	Amount
FY 2015-2022	Open Space Authority	Measure Q Parcel Tax	
FY 2015-2022	Open Space Authority	Measure T Parcel Tax	\$3,207
FY 2022-2023	Open Space Authority	Measure Q Parcel Tax	
FY 2022-2023	Open Space Authority	Measure T Parcel Tax	\$2,582
PROJECT TOTAL COST			\$5,789

Status
In Progress -
On Track

FY 2022/2023 Expenditure Breakdown

Expense Category	MQ Amount	MT Amount
Payroll and Benefits		\$2,582
Supplies and Consumables		
Outside Services		
Other Services and Fees		
Equipment and Maintenance		
Facilities and Utilities		
Acquisitions		
TOTAL FOR FISCAL YEAR 2022/2023		\$2,582

Outside Services include:

Note: Information on the types of expenditures that may be classified into each expense category can be found on page 9 of this report.

EPC #3

Environmental Training Center at Gavilan College

Project
Number
P-000342

Project Description

Develop MOU and partnership with Gavilan College and Conservation Corps to utilize Coyote Valley Campus for climate-related education and training and to benefit Authority's land and resources management. Assess potential for developing programming and public access opportunities from the Campus adjoining Coyote Valley conserved lands.

Program
Environmental
Education

Project closed. Determined not to be viable.

Status
Completed

Expenditure Overview

Fiscal Years	Funder	Funding Source	Amount
FY 2015-2022	Open Space Authority	Measure Q Parcel Tax	
FY 2015-2022	Open Space Authority	Measure T Parcel Tax	
FY 2022-2023	Open Space Authority	Measure Q Parcel Tax	
FY 2022-2023	Open Space Authority	Measure T Parcel Tax	\$1,639
PROJECT TOTAL COST			\$1,639

FY 2022/2023 Expenditure Breakdown

Expense Category	MQ Amount	MT Amount
Payroll and Benefits		\$1,639
Supplies and Consumables		
Outside Services		
Other Services and Fees		
Equipment and Maintenance		
Facilities and Utilities		
Acquisitions		
TOTAL FOR FISCAL YEAR 2022/2023		\$1,639

Outside Services include:

Note: Information on the types of expenditures that may be classified into each expense category can be found on page 9 of this report.

EPC #3

Tilton Ranch Complex Home Improvements

Project
Number
P-000346

Program
Capital
Improvement

Status
In Progress -
On Track

Project Description

The Tilton Ranch Complex is a remodeled 1917 3,200-square-foot ranch home on 60 acres. The home is on a raised foundation constructed of poured concrete with a basement. The Authority received a home inspection report upon purchase that recommends foundation improvements, seismic retrofit, and sump pump installation. Furthermore, the electrical work needs to be brought up to code and will require an electrician to assess and recommend updates.

Expenditure Overview

Fiscal Years	Funder	Funding Source	Amount
FY 2015-2022	Open Space Authority	Measure Q Parcel Tax	
FY 2015-2022	Open Space Authority	Measure T Parcel Tax	\$108
FY 2022-2023	Open Space Authority	Measure Q Parcel Tax	
FY 2022-2023	Open Space Authority	Measure T Parcel Tax	\$65,035
PROJECT TOTAL COST			\$65,143

FY 2022/2023 Expenditure Breakdown

Expense Category	MQ Amount	MT Amount
Payroll and Benefits		\$9,015
Supplies and Consumables		
Outside Services		\$55,496
Other Services and Fees		\$524
Equipment and Maintenance		
Facilities and Utilities		
Acquisitions		
TOTAL FOR FISCAL YEAR 2022/2023		\$65,035

Outside Services include: Construction; Engineering; Legal Services

Note: Information on the types of expenditures that may be classified into each expense category can be found on page 9 of this report.

EPC #3

Sobrato Boundary Fenceline

Project
Number
P-000349

Project Description

Installing fence line between Sobrato property and Xilinx for cattle grazing and agricultural operations.

Program
Capital
Improvement

Expenditure Overview

Fiscal Years	Funder	Funding Source	Amount
FY 2015-2022	Open Space Authority	Measure Q Parcel Tax	
FY 2015-2022	Open Space Authority	Measure T Parcel Tax	
FY 2022-2023	Open Space Authority	Measure Q Parcel Tax	
FY 2022-2023	Open Space Authority	Measure T Parcel Tax	\$46,279
PROJECT TOTAL COST			\$46,279

Status
Completed

FY 2022/2023 Expenditure Breakdown

Expense Category	MQ Amount	MT Amount
Payroll and Benefits		\$16,009
Supplies and Consumables		\$30,269
Outside Services		
Other Services and Fees		
Equipment and Maintenance		
Facilities and Utilities		
Acquisitions		
TOTAL FOR FISCAL YEAR 2022/2023		\$46,279

Outside Services include:

Note: Information on the types of expenditures that may be classified into each expense category can be found on page 9 of this report.

EPC #3

CRED General Operations & Maintenance

Project
Number
P-000350

Program
Operations

Status
Ongoing

Project Description

The daily operation, management and stewardship of the Authority’s lands and public access facilities includes trail and preserve maintenance, resource management such as grazing management, invasive plant management, site monitoring, resource and habitat enhancement, monitoring and maintaining capital structures, and careful stewardship and reporting for contract land management and mitigation.

Croy Redwoods is nestled in the Santa Cruz Mountains in Uvas Creek Canyon. This small preserve includes tributaries of Uvas Creek as well as several small groves of redwood trees. Steep terrain and dense vegetation are hallmarks of this preserve. Access is via a private road. The property is strategically located between Little Uvas Preserve and Uvas Canyon County Park.

This property has no public access at this time and is surrounded by private property.

Expenditure Overview

Fiscal Years	Funder	Funding Source	Amount
FY 2015-2022	Open Space Authority	Measure Q Parcel Tax	
FY 2015-2022	Open Space Authority	Measure T Parcel Tax	
FY 2022-2023	Open Space Authority	Measure Q Parcel Tax	
FY 2022-2023	Open Space Authority	Measure T Parcel Tax	\$441
PROJECT TOTAL COST			\$441

FY 2022/2023 Expenditure Breakdown

Expense Category	MQ Amount	MT Amount
Payroll and Benefits		\$441
Supplies and Consumables		
Outside Services		
Other Services and Fees		
Equipment and Maintenance		
Facilities and Utilities		
Acquisitions		
TOTAL FOR FISCAL YEAR 2022/2023		\$441

Outside Services include:

Note: Information on the types of expenditures that may be classified into each expense category can be found on page 9 of this report.

Project
Number
P-000352

Program
Operations

Status
Ongoing

Project Description

The daily operation, management and stewardship of the Authority’s lands and public access facilities includes trail and preserve maintenance, resource management such as grazing management, invasive plant management, site monitoring, resource and habitat enhancement, monitoring and maintaining capital structures, and careful stewardship and reporting for contract land management and mitigation.

Coyote Valley encompasses a total of 7,000 acres south of Santa Clara Valley and is home to wide range of flora and fauna alongside a diverse agricultural industry. The Authority owns and manages various parcels within this 7000-acre valley. Each unit within this area is managed with wildlife connectivity or agricultural preservation.

Docent led hikes and special access days connect the public to these lands and the history of Coyote Valley.

Expenditure Overview

Fiscal Years	Funder	Funding Source	Amount
FY 2015-2022	Open Space Authority	Measure Q Parcel Tax	
FY 2015-2022	Open Space Authority	Measure T Parcel Tax	
FY 2022-2023	Open Space Authority	Measure Q Parcel Tax	
FY 2022-2023	Open Space Authority	Measure T Parcel Tax	\$188
PROJECT TOTAL COST			\$188

FY 2022/2023 Expenditure Breakdown

Expense Category	MQ Amount	MT Amount
Payroll and Benefits		\$188
Supplies and Consumables		
Outside Services		
Other Services and Fees		
Equipment and Maintenance		
Facilities and Utilities		
Acquisitions		
TOTAL FOR FISCAL YEAR 2022/2023		\$188

Outside Services include:

Note: Information on the types of expenditures that may be classified into each expense category can be found on page 9 of this report.

EPC #3

2023 Winter Storms Emergency Response and Repairs

Project
Number
P-000353

Program
Operations

Status
In Progress -
On Track

Project Description

Due to the impacts of the winter storms of 2023 throughout the agency's Preserve System, additional maintenance and safety work is required to mitigate damage caused by the series of storms impacting our geographical area. This project will help to isolate the work performed in service of the storms and help isolate specific work in the case of future FEMA funding.

Expenditure Overview

Fiscal Years	Funder	Funding Source	Amount
FY 2015-2022	Open Space Authority	Measure Q Parcel Tax	
FY 2015-2022	Open Space Authority	Measure T Parcel Tax	
FY 2022-2023	Open Space Authority	Measure Q Parcel Tax	
FY 2022-2023	Open Space Authority	Measure T Parcel Tax	\$52,419
PROJECT TOTAL COST			\$52,419

FY 2022/2023 Expenditure Breakdown

Expense Category	MQ Amount	MT Amount
Payroll and Benefits		\$41,844
Supplies and Consumables		
Outside Services		\$10,575
Other Services and Fees		
Equipment and Maintenance		
Facilities and Utilities		
Acquisitions		
TOTAL FOR FISCAL YEAR 2022/2023		\$52,419

Outside Services include:

Note: Information on the types of expenditures that may be classified into each expense category can be found on page 9 of this report.

Urban Grant Program and Disbursements



(for printing purposes – this page intentionally left blank)

Grant Program Funded by Measure Q and Measure T

The Urban Grant Program is funded by both Measure Q and Measure T and offer grants that will benefit communities and neighborhoods within the Authority’s jurisdiction. The Authority’s jurisdiction includes the cities of San Jose, Milpitas, Santa Clara, Campbell, Morgan Hill and unincorporated areas of Santa Clara County.

The Urban Grant Program addresses the needs of urban communities, including areas that currently have limited access to preserves and parks. The grant program aims to fund projects that will improve the quality of life for urban residents. The competitive grants are open to non-profits, public agencies, schools, and school districts, and are awarded in one or more of these four categories:

- Environmental Stewardship and Restoration
- Parks, Trails, and Public Access
- Environmental Education
- Urban Agriculture/Food Systems



Guadalupe River Park Conservancy: Outdoor Field Trips

Each fiscal year, the Authority may set aside up to 25% of the parcel tax revenue received from Measure Q and Measure T to fund the grant programs. These **allocations** are earmarked as restricted funds and made available for the next grant cycle. The Authority’s Board of Directors solicits applications and approves the grant **awards**. The Authority records and reports the **disbursement** when payment is made to reimburse the grantee.

Starting in Fiscal Year 2021/2022, the Authority no longer allocates any funds towards the grant program using Measure Q funds. In its replacement, the Board approved an allocation of \$500,000, or 6% of the Measure T Parcel Tax revenue generated, to fund the grant program.

Urban Grant Program Guidelines

The Board-approved [Program and Capital and Planning Guidelines](#) document outlines the process and criteria the Authority will use to solicit grant applications, evaluate proposals, and award grants.

The document provides applicants with general information about the current solicitation, such as total funds available for award, eligibility, public workshop times and locations, and important dates and deadlines. It further defines the project categories, types, and requirements, as well as the evaluation criteria to which the Authority's review committee adheres when reviewing and scoring each application. For the 2022-2023 solicitation, the Board approved an update to the Urban Grant Program, which categorized awards into Program Grants (\$20,000 - \$100,000) and Capital/Planning Grants (\$40,000 - \$250,000), which were to be reviewed and awarded separately. A staff review team is formed to review and make recommendations to the Board of Directors. For the Capital/Planning Grants, the applications are also presented at a publicly-noticed Citizens' Advisory Committee (CAC) meeting where committee members review and provide feedback to staff for inclusion in final recommendations to the Board of Directors. The Board makes final award decisions in line with the goals and objectives of the Measure Q and Measure T Expenditure Plans.

Grant agreements are drafted and reviewed by the Authority's Legal Counsel. The grant agreements include the general terms and conditions of funding as well as a detailed Scope of Work, Project Goals, and Project Budget that are used to evaluate reimbursement requests, project deliverables, and work progress. Grantees are required to submit final reports confirming completion of the project and project goal results, which the Authority verifies against the grant agreement.

During the independent audit, disbursements paid during the fiscal year are reviewed against the grant agreements.

Through this process from award to disbursement, the Board provides feedback and approval on the grant awards, staff reviews and processes reimbursements, and the independent auditor examines disbursements to ensure all projects funded by the Authority with Measure Q and Measure T funds support the urban communities within the Authority's boundaries and are consistent with the Authority's mission and objectives of the *Expenditure Plans*.

Grant Disbursements and Balances as of June 30, 2023

A summary of all awards and disbursements made as of June 30, 2023, is shown below.

Table 12: Urban Grant Program

Grantee	Award	Total Disbursements	Balance
Children’s Discovery Museum	308,765	308,765	-
SAGE	10,000	10,000	-
Guadalupe River Park Conservancy	24,987	24,987	-
Latinos United for a New America (LUNA)	250,000	-	250,000
Bay Area Wilderness Training	40,000	40,000	-
Joseph George Middle School / Citizen Schools	24,675	14,532	-*
San Jose State University Research Foundation	166,740	162,184	-*
City of Campbell	35,762	20,815	-
Santa Clara County Public Health Department	250,000	250,000	-
Santa Clara County Creeks Coalition	12,142	12,142	-
Bay Area Ridge Trail Council	51,401	51,401	-
The Regents of the University of California / UCCE Santa Clara Cty	167,411	118,479	48,932
The Santa Clara County Food System Alliance	24,999	24,963	-*
Keep Coyote Creek Beautiful	76,703	62,468	14,235
City of Morgan Hill	248,012	239,658	-*
San Francisco Bay Bird Observatory	34,500	34,500	-
Friends of Master Gardeners of Santa Clara County	132,353	124,021	-*
		-	
Bay Area Ridge Trail Council	62,122	62,115	-*
Bay Area Wilderness Training	62,705	62,705	-
City of Morgan Hill	100,000	-	100,000
City of San Jose	30,000	29,788	-*
City of Santa Clara	59,250	59,245	-*
Guadalupe River Park Conservancy	27,010	22,864	-*
Keep Coyote Creek Beautiful	67,134	66,577	-*
Living Classroom	65,000	65,000	-
Our City Forest	100,000	99,432	-*
Sacred Heart Community Service	100,000	-	-**
Valley Verde	45,000	45,000	-
Veggielution	75,040	75,040	-
Bay Area Older Adults	8,000	8,000	-
Bay Area Wilderness Training	15,000	15,000	-
Guadalupe River Park Conservancy	22,038	22,038	-
Keep Coyote Creek Beautiful	14,312	14,312	-
Living Classroom	10,000	10,000	-
Sacred Heart Community Service	24,971	24,971	-
San Francisco Bay Wildlife Society	6,055	6,055	-
San Jose Children’s Discovery Museum	24,875	24,875	-
Veggielution	20,000	19,986	-*

Annual Expenditure Plan Status Report – FY 2022/2023

Grantee	Award	Total Disbursements	Balance
Saved By Nature	39,951	39,327	-*
Environmental Volunteers	32,063	31,355	-*
Sacred Heart Community Service	39,900	35,910	3,990
Earth Island Institute - BAWT	24,960	24,960	-
Santa Clara Unified School District	31,750	31,750	-
Keep Coyote Creek Beautiful	37,702	37,568	-*
Veggielution	150,000	91,634	58,366
Santa Clara Valley Audubon Society	79,608	11,237	68,371
Bay Area Older Adults	95,561	66,751	28,810
Guadalupe River Park Conservancy	130,000	17,658	119,667
Santa Clara County Public Health Department	100,000	20,081	96,507
San Jose State University Research Foundation	160,000	82,560	112,363
Living Classroom	40,000	40,000	-
Bay Area Ridge Trail Council	40,000	40,000	-
Silicon Valley Bicycle Coalition	40,000	24,154	15,846
San Francisco Bay Bird Observatory	40,000	5,969	34,031
Acterra: Action for a Healthy Planet	99,719	-	99,719
Bay Area Ridge Trail Council	28,007	-	28,007
City of Santa Clara Parks and Recreation Department	21,076	-	21,076
Earth Island Institute – Bay Area Wilderness Training	34,306	-	34,306
Garden to Table Silicon Valley	50,000	-	50,000
Green Foothills	94,776	-	94,776
Guadalupe River Park Conservancy	44,400	-	44,400
San Jose Conservation Corps and Charter School	100,000	-	100,000
San Jose State University Research Foundation	100,000	-	100,000
Santa Clara Unified School District	64,580	-	64,580
Saved by Nature	99,985	-	99,985
Valley Verde	75,000	-	75,000
Veggielution	100,000	-	100,000
TOTALS	\$4,790,306	\$2,832,928	\$1,804,132

*Grantee did not claim eligible disbursements in the full award amount

**Grant canceled

EPOC and Administrative Expenditures



(for printing purposes – this page intentionally left blank)

Expenditure Plan Oversight Committee Costs

Expenditure Plan Oversight Committee Costs represent expenditures related to the ongoing costs of administering committee meetings. Expenses include fees for the annual audit preparation, expenses for public meetings conducted by the EPOC, legal costs for EPOC, and staff time for board packet preparation related to EPOC meetings. Expenses charged to this program cannot exceed $\frac{1}{10}$ of 1% of parcel tax gross revenues. Any amount in excess of the allowance is charged to the administrative costs allowance. Table 12 summarizes the expenses incurred for Fiscal Year 2022/2023.

Table 13: Breakdown of EPOC Costs	Amount
Committee Expenses and Board Packet Preparation	\$6,018
Annual Independent Financial Audit Services and Preparation	\$2,000
TOTAL EPOC COSTS	\$8,018

Administrative Costs

Administrative expenses are costs that the Authority incurs during the ordinary course of business, and not directly associated with a specific expense category or Measure Q or T-eligible project. Administrative expenses may include but are not limited to legal services, facility maintenance, electricity and other utilities, business insurance, fees and taxes, general office supplies, computer software and equipment, and printing and courier expenses.

Under the Measure T Expenditure Plan guidelines, the Board approves an allowance for administrative expenses each fiscal year. For Fiscal Year 2022/2023, the Board approved a budget of \$1,000,000 of Measure T revenues to partially fund the agency’s administrative expenses. Accordingly, the Authority only charges a portion of its total annual administrative expenses to Measure T. Any remaining balance is charged to other funding sources. The administrative expenses are reviewed and verified by the independent auditor to ensure the portion charged to Measure T does not exceed the Board-approved allowance.

Administrative expenses charged to the Urban Grant Program primarily consist of staff time spent reviewing and processing grant agreements and disbursements and managing the overall grant cycle process. Besides administrative expenses incurred by the Authority for the grant program, grant applicants may request administrative budget for their projects. If the grant is awarded, any disbursements for administrative expenses made to the grantee count towards the five percent allowance.

Additional administrative expenses related to Measure T include staff time spent preparing and publishing the Annual Expenditure Plan Status Report and contracting for parcel tax engineering services with a tax administrator.

Other general administrative costs related to running the Authority are allowed under the Expenditure Plan. In this Fiscal Year 2022/2023, Measure T allowed the Authority to purchase land management supplies, small tools, and fuel used by the general office and field staff.

Table 14 summarizes the expenses incurred and charged to the Measure T fund in Fiscal Year 2022/2023.

Table 14: Breakdown of Administrative Costs	Amount
GIS Program Management	\$62,728
Communications and Media Program	\$15,340
Urban Grant Program Administration	\$134,531
General Grant Funding Research and Writing	\$67,570
Replace Existing Grant Management Software	\$5,301
Strategic Preserve Planning Program	\$24,395
Annual Expenditure Plan Status Report Preparation	\$3,832
Measure Q and T Parcel Tax Engineering Services	\$9,388
Committee Packet Preparation and Attendance	\$21,462
Equipment for Operations Use Across All Preserves	\$64,671
General Supplies and Consumables	\$584,003
TOTAL ADMINISTRATIVE COSTS	\$993,221



Appendices



- A. Index of Projects Funded by Measure Q and Measure T in Fiscal Year 2022/2023
- B. Responses to the Measure Q Oversight Report and Recommendations
- C. The Open Space, Wildlife Habitat, Clean Water and Increased Public Access Expenditure Plan (Measure Q)
- D. 2020 Expenditure Plan (Measure T)

(for printing purposes – this page intentionally left blank)

Index of Projects Funded by Measure Q and Measure T in Fiscal Year 2022/2023

Project Number	EPC	Project	MQ Funds Expended in FY 22/23	MT Funds Expended in FY 22/23	Status	Page Number
K-000188	1	Regional Project Reviews		47,948	Ongoing	33
P-000014	1	Fuels Management Plan		26,626	In Progress - Delayed	34
P-000019	1	Priority Land Acquisition Projects	138,646	62,993	Ongoing	35
P-000024	1	Coyote Valley Conservation Strategy		59,723	Ongoing	36
P-000026	1	Santa Clara Valley Agricultural Plan		29,246	Completed	37
P-000028	3	Coyote Ridge Open Space Preserve Public Access Plan	1,105,143		In Progress - On Track	57
P-000032	3	Coyote Valley Open Space Preserve Improved North Meadow Public Access	123,648		In Progress - On Track	58
P-000035	3	Coyote Valley Open Space Preserve Equestrian Lot Improvements		683	In Progress - Delayed	59
P-000036	3	Rancho Cañada del Oro Llagas Creek Bridge and Day Use Area	39,257		In Progress - On Track	60
P-000087	3	Coyote Valley Open Space Preserve Operations & Maintenance		268,420	Ongoing	61
P-000088	3	Sierra Vista Open Space Preserve Operations & Maintenance		718,944	Ongoing	62
P-000089	3	Coyote Ridge Open Space Preserve Operations & Maintenance		80,525	Ongoing	63
P-000090	3	Rancho Cañada del Oro Open Space Preserve Operations & Maintenance		244,737	Ongoing	64
P-000091	3	Diablo Foothills Open Space Preserve Operations & Maintenance		35,585	Ongoing	65
P-000092	3	Little Uvas Open Space Preserve Operations & Maintenance		8,177	Ongoing	66
P-000093	3	Palassou Ridge Open Space Preserve Operations & Maintenance		15,574	Ongoing	67
P-000095	3	North Pajaro River Agricultural Preserve Operations & Maintenance		21,790	Ongoing	68
P-000096	3	Santa Teresa Foothills Open Space Preserve Operations & Maintenance		5,816	Ongoing	69
P-000097	3	Upper Uvas Open Space Preserve Operations & Maintenance		2,858	Ongoing	70
P-000098	3	Mount Chual Open Space Preserve Operations & Maintenance		3,491	Ongoing	71
P-000099	3	El Toro Open Space Preserve Operations & Maintenance		3,218	Ongoing	72
P-000112	1	Conservation Easement Monitoring		8,282	Ongoing	38
P-000123	1	Natural Resource Policy and Planning		69,091	Ongoing	39
P-000158	2	Coyote Ridge Open Space Preserve Grazing and Habitat Improvements		15,342	Completed	47
P-000202	3	South Pajaro River AP Operations & Maintenance		4,749	Ongoing	73

Project Number	EPC	Project	MQ Funds Expended in FY 22/23	MT Funds Expended in FY 22/23	Status	Page Number
P-000203	1	Tilton Ranch Acquisition	12,236	30,399	In Progress - On Track	40
P-000227	2	Blair Ranch Pond Habitat Enhancement (RC-07 & RC-10)		19,612	In Progress - Delayed	48
P-000247	3	Interp & Environmental Education Program		218,725	Ongoing	74
P-000248	3	Volunteer Program		98,827	Ongoing	75
P-000249	1	Coyote Valley Acquisitions	71,116		In Progress - On Track	41
P-000250	1	Coyote Valley Conservation Areas Master Plan		733,118	In Progress - On Track	42
P-000251	2	Pajaro River Riparian Restoration		8,474	In Progress - Delayed	49
P-000267	3	North Coyote Valley Conservation Area Operations & Maintenance		51,221	Ongoing	76
P-000268	3	Tulare Meadows Operations & Maintenance		37,371	Ongoing	77
P-000269	2	Fisher Creek Riparian Habitat Restoration (SEP-funded)		5,533	Completed	50
P-000272	3	Fisher's Bend Agricultural Preserve Operations & Maintenance		14,806	Ongoing	78
P-000280	3	American Disabilities Act Transition Plan		108,929	In Progress - On Track	79
P-000283	3	Parking Reservation System		2,130	In Progress - Delayed	80
P-000307	2	Spreckles Wetland Enhancement Project		3,510	In Progress - Delayed	51
P-000308	2	Fisher Creek Riparian Habitat Restoration (BEF-Funded)		7,439	In Progress - On Track	52
P-000309	3	COVA Operations and Maintenance		82,059	Ongoing	81
P-000327	1	Environmental Credits Program w City of San Jose		5,492	Completed	43
P-000336	3	Monarch Habitat Restoration Project		2,582	In Progress - On Track	82
P-000337	1	Bay Property Donation		15,955	Completed	44
P-000342	3	Environmental Training Center at Gavilan College		1,639	Completed	83
P-000343	2	Fisher Creek Riparian Habitat Restoration (NFWF-Funded)		4,559	In Progress - Delayed	53
P-000344	2	Llagas Creek and Pajaro River Confluence Restoration Project		14,780	In Progress - On Track	54
P-000346	3	Tilton House Complex Home Improvements		65,035	In Progress - On Track	84

Project Number	EPC	Project	MQ Funds Expended in FY 22/23	MT Funds Expended in FY 22/23	Status	Page Number
P-000349	3	Sobrato Boundary Fenceline		46,279	Completed	85
P-000350	3	Croy Redwoods Operations & Maintenance		441	Ongoing	86
P-000352	3	Coyote Valley Operations & Maintenance		188	Ongoing	87
P-000353	3	2023 Winter Storms Emergency Response and Repairs		52,419	In Progress - On Track	88

Authority Board of Directors' Response to EPOC Oversight Report Recommendations for Fiscal Year 2022/2023

The Expenditure Plan Oversight Committee (EPOC) provides an independent review of all revenues and expenditures of Measure Q and Measure T Funds. The Committee, appointed by the Authority Board of Directors pursuant to Measure Q and Measure T, ensures accountability, transparency and public oversight of all funds collected and allocated under the parcel tax.

The Committee's roles and responsibilities, as defined by the Expenditure Plans, are to:

- Review Expenditure Plan expenditures on an annual basis to ensure they conform to the Expenditure Plan.
- Review the annual audit and report prepared by an independent auditor; and
- Submit the Committee's recommendations and oversight report to the Open Space Authority Board.

The Committee does not oversee any other Authority financial information, nor do they set policy or provide input or direction on projects, budgets, work plans or financial matters pertaining to other Authority funds.

On May 25, 2023, the Expenditure Plan Oversight Committee (EPOC) presented the Annual Expenditure Plan Oversight Committee Report to the Open Space Authority Board of Directors, providing a summary and recommendations on Measure Q and Measure T expenditures for FY 2022/2023. At the meeting, Staff stated they would bring the recommendations to the Board for review and response to the recommendations.

On September 14, 2023, Staff brought the recommendations to the Board of Directors for review. Staff provided an update on actions they had implemented in response to the EPOC's feedback. The Board approved the Authority's responses and actions for each of the EPOC's recommendations, which are documented herein.

Based on the review of the Annual Report:

- SCVOSA staff provide documentation of the Board approval of the allowable administrative expenses to be paid with Measure T revenues with the review of the Annual Report

Staff Response: Staff will include in the Annual Report a copy of the Board-approved resolution adopting the annual budget. This document will note the allowable administrative expenses amount to be paid with Measure T revenues.

Based on the sample transactions audit:**Related to cover sheet:**

- None

Related to documentation:

- None

Related to internal SCVOSA processes:

- The EPOC recommends that the SCVOSA carefully monitor the use of Measure Q and Measure T funds to purchase permanent assets, such as tools, using Urban Grant funds. The EPOC notes that there is a risk that a) the expenditure may be unnecessary if the grantee already has the assets, or that b) the asset may be used for other projects or retained for personal use by a member of the grantee organization.

Staff Response: Every grant program has its own rules and guidelines for eligible costs. For equipment costs, it is common for grants to fund purchase of equipment that is directly used for the project.

Per the Authority's Board-approved Urban Grant Program Guidelines, equipment purchases that can be directly attributed to the project AND are newly acquired specifically for the project are eligible direct costs.

The Urban Grant Program is a competitive grant program, and the applications are scored based on their project description, including a project budget. If there were unusual equipment costs in the application budget it would likely raise questions by the Citizens' Advisory Committee (CAC) and Board of Directors. It could also affect scoring by the staff review committee.

As long as the cost is eligible according to the guidelines AND was a cost outlined in the approved scope and budget, the equipment costs would be eligible for reimbursement.

Related to timecard/payroll review:

- Audit labor hours for at least one project each year.
- EPOC and SCVOSA staff cooperate to develop an effective Sample Transaction Cover Sheet that accommodates auditing and reporting on project labor hours.

Staff Response: Staff will continue to provide summaries of labor hours categorized by project and it is at the Committee's discretion whether to select and audit labor hours for at least one project each year. Staff will collaborate with EPOC at an upcoming meeting to update the Sample Transaction Cover Sheet to better align with review of project labor hours.

Based on the review of the SCVOSA website:

- Rename the Investing in Nature page to “Investing in Nature - Measure Q/Measure T.”
- Make the additional three key programs funded with Measure Q and Measure T revenues – protect lands, environmental education programs and urban grant programs – equally visible to the Preserves on the main page of the SCVOSA website.

Staff Response: Public Affairs staff will consider the Committee’s recommendation and recommend solutions aligned with the agency’s strategic communications plan as well as Board feedback.

The Open Space, Wildlife Habitat, Clean Water and Increased Public Access Expenditure Plan

A. Summary

Since its creation in 1993, the Santa Clara County Open Space Authority (OSA) has protected over 16,000 acres of open space and natural areas, preserving the natural beauty and health of our area, and protecting our region's water resources, air quality, wildlife and scenic views for residents today and future generations. Governed by a publicly elected board of directors, OSA has used funds wisely, bringing in state, federal, and private grant money, and providing annual audits in a transparent public process.

However, the Santa Clara County Open Space Authority currently faces significant challenges. As our region continues to grow, protecting hillsides and open spaces are increasingly important to our community. If adopted by voters, the Open Space, Wildlife Habitat, Clean Water, and Increased Public Access Measure (Measure) would allow OSA to protect and preserve natural open space areas for future generations by: improving parks, open spaces and trails; protecting land around creeks, rivers and streams to prevent pollution and improve local water quality; preserving wildlife habitat; expanding public access; enhancing environmental education; and protecting scenic hillsides.

The Santa Clara County Open Space Authority will ensure that the revenue generated is spent in the most efficient and effective manner possible, consistent with serving the public interest and in accordance with existing law. The Authority shall use the funding only for the purposes set forth in this Expenditure Plan ("Plan") and it shall give priority to projects in this Plan.

The high priority potential projects listed in the Plan are the result of a broad public engagement process to create a shared vision for the future of the region's open space. This vision plan developed by the Santa Clara County Open Space Authority, called the *Santa Clara Valley Greenprint*, identifies high priority open space and natural resource lands as identified in this Plan. If approved, the proceeds from the parcel tax would be allocated to fund high priority projects distributed throughout the Santa Clara County Open Space Authority's jurisdiction such as those listed below.

The Authority may annually review and propose amendments to the Plan to provide for the use of additional federal, state and local funds, to account for unexpected revenues, or to take into consideration unforeseen circumstances, provided, however, that all funds collected pursuant to the Measure shall be used solely for the purposes of this Plan as presented to the voters.

B. Program Descriptions

1. Protect Open Space, Redwood Forests, Wildlife Habitat, Scenic Hillside and Agricultural Land

The purpose of this program is to permanently protect new open space lands essential to completing connections in the region's park, open space and habitat systems as identified in the Authority's *Santa Clara Valley Greenprint*, the *County Parks Acquisition Plan*, *Santa Clara Valley Habitat Plan*, and other adopted plans.

- a. Ensure permanent protection of essential open space, water resources and wildlife habitat. Areas for open space protection can include but are not limited to Baylands, East San Jose Foothills, Upper Alameda Creek Watershed, Coyote Ridge, Coyote Valley, Upper Coyote Creek Watershed, Southern Santa Cruz Mountains, Sargent Hills, Upper Pajaro River Watershed, Pacheco Creek Watershed. Protect, restore and enhance critical habitat to implement the Valley Habitat Plan such as serpentine grasslands, wetlands, redwood forests and riparian areas along creeks, rivers and streams.
- b. Leverage public and private funding and coordinate protection efforts to complete critical open space preservation
- c. Conserve the region's last remaining farmland and rangelands in and around areas such as the Coyote Valley, Morgan Hill, Gilroy and Pajaro River to protect local food and maintain environmental benefits provided by agricultural lands including water supply, groundwater recharge, flood risk reduction, and habitat protection.
 - i. Conserve high priority farmland and rangelands through voluntary agreements with willing landowners.
 - ii. Provide grants to resource conservation districts (RCDs) and other agricultural organizations to work with farmers and ranchers to promote natural resource stewardship.

2. Protect Land around Creeks, Rivers and Streams to Prevent Pollution and Improve Local Water Quality and Supply

The purpose of this program is to protect and restore natural areas that buffer our rivers, lakes and streams, including the Guadalupe River, Coyote Creek, Fisher Creek, Penitencia Creek, Upper Alameda Creek, Uvas Creek, Llagas Creek, Pacheco Creek, Pescadero Creek and the Pajaro River to protect water supply and water quality.

- a. Protect clean, safe drinking water supplies by restoring and enhancing natural areas around local creeks, rivers and streams from their headwaters in the hills to the Bay.
- b. Preserve key open space areas to enhance local water supply and recharge groundwater.
- c. Protect water resources, floodplains, wetlands and riparian corridors.

3. Open, Improve and Maintain Parks, Open Space, and Trails

The purpose of this program is to maintain existing Open Space Preserves, safeguard the health of natural areas and wildlife habitat; reduce the risk of wildfires; provide more hiking and walking trails and increase opportunities for environmental education experiences.

- a. Open and expand Preserves on existing lands, including more trails for walking, hiking and biking and more access points for residents. Develop science-based environmental education programs and facilities, trails, and other public access facilities in appropriate locations including East San Jose/Penitencia Creek/Milpitas Foothills, Coyote Ridge, Coyote Valley, Morgan Hill El Toro Peak, Almaden Valley/Santa Teresa Hills.
- b. Construct new trails and close gaps in regional hiking and bicycle trails (such as the Bay Area Ridge Trail, San Francisco Bay Trail, Coyote Creek Trail and Guadalupe River).
- c. Reduce the risk of wildfire near communities, protect air and water quality and control invasive, non-native weeds through vegetation management in coordination with fire districts, cities and the County.
- d. Provide safe, well-maintained Open Space Preserves and recreational trails, including the Bay Area Ridge Trail, San Francisco Bay Trail, Guadalupe River Trail and Coyote Creek Trail.
- e. Work with qualified organizations and entities, including, but not limited to, the California Conservation Corps, the San Jose Conservation Corps, AmeriCorps and others, to maintain facilities in Open Space Preserves including, but not limited to, cultural and historic structures, bridges, roads, and other infrastructure.
- f. Prevent pollution and vandalism of open space, water resources and wildlife habitat.

4. Urban Open Space, Parks and Environmental Education Program

The purpose of this Grant Program is to assist municipalities, schools and applicable non-profit organizations within the cities of Milpitas, Santa Clara, San Jose, Campbell, Morgan Hill and urban County areas to create healthy and safe open space and park areas for their communities by creating or improving parks, preserving open space and maintaining or creating trails; enhancing and restoring habitat, natural resources and water resources; and enhancing access to healthy food through urban farms and gardens.

No more than 25 percent of the revenues generated by this funding measure will be made available for this Grant Program. The Grant Program would provide grants to cities, the County, schools and non-profit organizations on a competitive basis for the types of projects listed below within the boundaries of the OSA. Funds shall be available through an annual grant allocation process designed by the Santa Clara County Open Space Authority, in coordination with cities, the County, schools and non-profit organizations within the boundaries of the OSA. Grant allocations shall reward a diversity of projects and be balanced geographically across the Santa Clara County Open Space Authority's jurisdiction. The grant allocation process and the individual projects shall be subject to approval by the Authority's Governing Board of Directors ("Board").

Urban Open Space Project Criteria:

- a. Protect and enhance open space, wildlife habitat and wildlife corridors, and develop land for nature-based parks, open space preserves, trails and greenbelts.
- b. Create, develop and implement pedestrian and bicycle trail connections to connect urban communities to local and regional parks, Open Space Preserves, creeks and flood control channels, to improve public health (i.e. San Francisco Bay Trail, Coyote Creek, Guadalupe River, Silver Creek, Thompson Creek, Penitencia Creek, Three Creeks Trail, Five Wounds Trail).
- c. Implement urban tree planting and tree protection/maintenance.
- d. Create and expand urban farms and community gardens to support public health and local agriculture.
- e. Expand nature and science-based environmental education programs and hands-on youth engagement projects.

EXAMPLES OF HIGH PRIORITY POTENTIAL PROJECTS AND GEOGRAPHIC DISTRIBUTION

1. San Francisco Baylands Restoration: Increase wildlife habitat and reduce pollution by restoring salt ponds to tidal marsh, provide enhanced flood control, and develop new public access to the Bay
2. Alviso Adobe and Higuera Adobe Parks: Establish Alviso Adobe as a historical museum, and refurbish the historic Caretaker's Cottage in Higuera Adobe Park in collaboration with the City of Milpitas
3. San Francisco Bay Trail: Increase public access by closing gaps in Bay Trail walking and biking trail connections
4. San Francisco Bay Area Water Trail: Provide Water Trail public access amenities at Alviso Marina
5. Ulistac Natural Area: Increase educational programming, and restore natural habitat
6. Sierra Vista: Establish staging area and trails, convert historic residence to visitor hostel, restore pond and wildlife habitats for endangered species
7. Penitencia Creek Trail: Complete trail linking Penitencia Creek community to Alum Rock Park and Sierra Vista Open Space Preserve
8. Guadalupe River Nature Center and Environmental Programming: Partner with nonprofits to establish outdoor environmental education learning center and interpretive programming for youth and families
9. Five Wounds Trail: Develop additional trails connecting to future public transit station
10. Coyote Creek Trail: Expand walking and biking trail connections and restore natural habitats
11. Silver Creek Trail: Increase walking and biking opportunities by creating connections to regional trails, parks and transit
12. Three Creeks Trail: Complete eastern trail alignment

13. San Tomas Aquino /Saratoga Creek Trail: Construct walking and biking trails through cities of Campbell and Santa Clara
14. Thompson Creek Trail Improvements: Complete walking and biking trail improvements
15. Guadalupe River Trail: Expand walking and biking trail connections
16. Martial Cottle Park: Partner with County Parks to develop trail link to Blossom Hill Light Rail Station and implement recreation and wetland restoration projects
17. Santa Teresa Hills: Partner with City of San Jose, County and Santa Teresa Neighborhood Association to protect land and develop regional ridgeline trail connections to create more access to local trails
18. Coyote Ridge: Establish new open space preserve with parking and regional trails, and protect and restore habitat for endangered species
19. Calero County Park: Partner with County to establish a staging area, public access and trails at Rancho San Vicente and at McKean Road
20. Coyote Valley Open Space Preserve: Build an outdoor learning center and a loop trail accessible to seniors and people with disabilities, and restore and enhance wetland habitat
21. Coyote Valley Agriculture and Natural Resource Reserve: Preserve agricultural lands, enhance natural resources, establish public access, and protect wildlife corridor
22. Youth Agricultural Education and Demonstration Farm: Partner with Cities of San Jose, Morgan Hill, Sobrato High School, nonprofits and agricultural organizations to establish an agricultural education and demonstration farm in the Coyote Valley Greenbelt
23. Rancho Cañada del Oro Open Space Preserve: Restore wildlife habitat, build an interactive education center, and construct new staging area and regional trails for increased public access
24. El Toro Peak: Partner with City of Morgan Hill to establish an open space preserve with staging area and trails, and restore natural habitat
25. Southern Santa Cruz Mountains: Establish regional trail connections between Uvas Reservoir, Uvas County Park and Rancho Cañada del Oro Open Space Preserve, develop staging area, and protect wildlife corridor
26. Uvas Creek: Protect wildlife habitat and corridor, protect natural lands for water supply and water quality, and increase trails to close gaps in regional trails
27. Palassou Ridge: Establish open space preserve, restore historic stone house for visitor center, develop multi-use trails connecting to Henry Coe State Park; implement wildfire prevention and habitat restoration projects
28. Diablo Foothills: Establish open space preserve, restore wetlands and bird habitat, implement public access improvements
29. Sargent Hills: Protect wildlife corridor, create staging area, public access and regional trail connections to the Bay Area Ridge Trail

30. South County Agriculture: Conserve working farms and ranches near Morgan Hill, Gilroy and Pajaro River for greenbelts and agricultural viability and to enhance flood control, water quality, wildlife habitat and connectivity

C. Administrative Provisions and Fiscal Safeguards

1. Citizen Oversight and Independent Financial Audits

In order to ensure accountability, transparency and public oversight of all funds collected and allocated under this Measure and to comply with state law, all of the following shall apply:

- a. On or before January 1 of each fiscal year, the Authority's chief fiscal officer shall file an annual report with the Board that explains (1) the amount of funds collected and expended under this Measure and (2) the status of the projects authorized to be funded by this revenue in compliance with Government Code Sections 50075.1(d), 50075.3.
- b. No later than June 30, 2015, or the first collection of revenue pursuant to the Measure, whichever is later, an Independent Oversight Committee shall be convened to review the expenditures of all parcel tax revenues collected under this Measure. The Board shall establish by resolution the terms, composition, and specific duties of the Oversight Committee, consistent with the "Citizen Oversight and Independent Financial Audits" provisions set forth in this Part C(1). The Oversight Committee will consist of seven at-large members. In making appointments to the Oversight Committee, the Board will seek to reflect the demographic diversity of its jurisdiction.
- c. Members of the Oversight Committee shall be appointed by the Board and shall be residents within the Santa Clara County Open Space Authority's jurisdiction who are neither elected officials of any government, nor employees from any agency or organization that directly benefits financially from the proceeds of the parcel tax.
- d. Oversight Committee meetings will be announced in advance and will be open to the public. The Oversight Committee shall meet at least once but no more than four times per year.

The responsibilities of this Committee include:

- Reviewing Plan expenditures on an annual basis to ensure they conform to the Plan.
 - Reviewing the annual audit and report prepared by an independent auditor and submitting its recommendations and oversight report thereon.
- e. All actions, including decisions about selecting projects for funding, will be made by the Board in public meetings in compliance with the Brown Act
 - f. Annual levies of the parcel tax would start in 2015.
 - g. To the extent allowable by law, all residential and non-residential parcels will be uniformly taxed.

- h. The revenue raised by the Measure for the purposes described in this Plan will be administered by the Santa Clara County Open Space Authority. All funds shall be placed in a separate account to hold all funds collected pursuant to the Measure.

2. Additional Allocation Criteria and Community Benefits

The Santa Clara Open Space Authority shall ensure that the revenue generated by the Measure is spent in the most efficient and effective manner possible, consistent with serving the public interest and in accordance with existing law and this Plan.

- a. The Santa Clara Open Space Authority shall make all final decisions regarding implementation of the Plan and funding for any specific high priority projects. The Board shall give priority to projects within its jurisdiction that meet multiple objectives of the *Santa Clara Valley Greenprint*, including one or more of the following objectives:
 - i. Have a significant positive effect on the health of land, water, and wildlife habitat, safety and quality of life for OSA residents.
 - ii. Provide for geographic distribution of projects across OSA's jurisdiction.
 - iii. Increase impact by leveraging state and federal resources as well as public/private partnerships.
 - iv. Strengthen connections between communities and open space through regionally-significant trails and transit access.
 - v. Benefit the economy and sustainability of the region by investing in nature-based infrastructure and local workforce development.
 - vi. Engage youth and young adults in local workforce development and assist them in gaining skills and experience related to protection and stewardship of the natural environment, wildlife, water resources and agricultural lands.
- b. The Board shall conduct one or more public meetings annually to gain public input on selection of project grants to expend revenues generated by the Measure.
- c. The Santa Clara County Open Space Authority may accumulate revenue over multiple years so that sufficient funding is available for larger and long-term projects. All interest income shall be used for the purposes identified in this Plan.
- d. No more than 5% of the revenue generated by this measure and provided to the Santa Clara County Open Space Authority may be used for administrative expenses.
- e. Costs of performing or contracting for project related work shall be paid from the revenues of the measure allocated to the appropriate purpose and project.
- f. An annual independent audit shall be conducted to assure that the revenues expended by the Santa Clara County Open Space Authority under this Plan are necessary and reasonable in carrying out its responsibilities under this Plan.

- g. To the extent permitted by law, up to one-tenth of one percent (0.1 %) of the gross proceeds of the parcel tax shall be made available for the Oversight Committee’s activities.
- h. Parcel tax proceeds are intended to augment annual support for the Santa Clara County Open Space Authority and do not substitute for individual city or County obligations. Monies from this program may not go to a city's or the County's "General Fund."



2020 Expenditure Plan The Open Space, Wildlife Habitat, Clean Water and Increased Public Access Measure Expenditure Plan

A. Summary

Since its creation in 1993, the Santa Clara Valley Open Space Authority (Authority) has protected over 26,000 acres of open space and natural areas, preserving the natural beauty and health of our area, and protecting our region's water resources, air quality, wildlife, and scenic views for residents today and future generations. Governed by a publicly elected board of directors, the Authority has used funds wisely, bringing in state, federal, and private grant money, and providing annual financial audits in a transparent public process.

However, the Authority currently faces significant challenges. As our region continues to grow, protecting hillsides and open spaces are increasingly important to our community. If extended by voters, the Open Space, Wildlife Habitat, Clean Water, and Increased Public Access Measure (Measure) would allow the Authority to continue to protect and preserve natural open space areas for future generations by: (1) protecting open space, redwood forests, wildlife habitat, scenic hillsides, and agricultural land; (2) protecting land around creeks, rivers, and streams to prevent pollution and improve local water quality and supply; (3) opening, improving and maintaining parks, open space, and trails; and (4) providing urban open space, parks, and environmental education through a competitive Urban Grant Program.

The Authority will ensure that the revenue generated is spent in an efficient and effective manner, consistent with serving the public interest and in accordance with existing law. The Authority shall use the funding only for the purposes set forth in this Expenditure Plan (Plan) and it shall give priority to programs in this Plan.

The potential projects listed in the Plan were informed by the *Santa Clara Valley Greenprint*, a vision plan for the future of the region's open space developed by the Santa Clara Valley Open Space Authority. If approved, the proceeds from the parcel tax would be allocated to fund projects distributed throughout the Authority's jurisdiction including, but not limited to, those listed below.

The Authority may annually review and propose amendments to the Plan to provide for the use of additional federal, state, and local funds, to account for unexpected revenues, or to take into consideration unforeseen circumstances, provided, however, that all funds collected pursuant to the Measure shall be used solely for the purposes of this Plan as presented to the voters.

B. Program Descriptions**1. Protect Open Space, Redwood Forests, Wildlife Habitat, Scenic Hillsides, and Agricultural Land**

The purpose of this program is to permanently protect new open space and agricultural lands essential to completing connections in the region's park, open space, and habitat systems as identified in the Authority's *Santa Clara Valley Greenprint*, the *County Parks Acquisition Plan*, *Santa Clara Valley Habitat Plan*, *Santa Clara Valley Agricultural Plan*, *Santa Clara County Regional Conservation Investment Strategy*, and other adopted plans.

- a. Ensure permanent protection of essential open space, water resources, and wildlife habitat. Areas for open space protection can include but are not limited to Baylands, East San Jose Foothills, Upper Alameda Creek Watershed, Coyote Ridge, Coyote Valley, Upper Coyote Creek Watershed, Southern Santa Cruz Mountains, Sargent Hills, Upper Pajaro River Watershed, Pacheco Creek Watershed. Protect, restore, and enhance critical habitat to implement the Valley Habitat Plan such as serpentine grasslands, wetlands, redwood forests, and riparian areas along creeks, rivers, and streams.
- b. Leverage public and private funding and coordinate protection efforts to complete critical open space preservation.
- c. Conserve the region's last remaining farmland and rangelands in and around areas such as the Coyote Valley, Morgan Hill, San Martin, Gilroy, and Pajaro River to protect local food sources and address food security, reduce impacts of climate change, and maintain environmental benefits provided by agricultural lands including water supply, groundwater recharge, flood risk reduction, habitat protection, and climate resilience.
 - i. Conserve high priority farmland and rangelands through voluntary agreements with willing landowners.
 - ii. Provide grants to resource conservation districts (RCDs) and other agricultural organizations to work with farmers and ranchers to promote natural resource stewardship.

2. Protect Land around Creeks, Rivers, and Streams to Prevent Pollution and Improve Local Water Quality and Supply

The purpose of this program is to protect and restore natural areas that buffer our rivers, creeks, and streams, including the Guadalupe River, Coyote Creek, Fisher Creek, Penitencia Creek, Upper Alameda Creek, Uvas Creek, Llagas Creek, Pacheco Creek, Pescadero Creek, and the Pajaro River to protect water supply, water quality, and enhance resilience to climate change.

- a. Protect clean, safe drinking water supplies by restoring and enhancing natural areas around local creeks, rivers, and streams from their headwaters in the hills to the Bay.
- b. Preserve key open space areas to enhance local water supply and recharge groundwater.
- c. Protect water resources, floodplains, wetlands, and riparian corridors.

3. Open, Improve and Maintain Parks, Open Space, and Trails

The purpose of this program is to maintain existing open space preserves; safeguard the health of natural areas and wildlife habitat; reduce the risk of wildfires; provide more hiking and walking trails; and increase opportunities for environmental education experiences.

- a. Open and expand preserves on existing lands, including more trails for walking, hiking, and biking and more access points for residents. Develop science-based environmental education programs and facilities, trails, and other public access facilities in appropriate locations including East San Jose/Penitencia Creek/Milpitas Foothills, Coyote Ridge, Coyote Valley, Morgan Hill/El Toro Peak, Almaden Valley/Santa Teresa Hills.
- b. Construct new trails and close gaps in regional hiking and bicycle trails (such as the Bay Area Ridge Trail, San Francisco Bay Trail, Coyote Creek Trail, Juan Bautista de Anza National Historic Trail, and Guadalupe River Trail).
- c. Reduce the risk of wildfire near communities, protect air and water quality, and control invasive, non-native weeds through vegetation management in coordination with fire districts, cities, and the County.
- d. Provide safe, well-maintained open space preserves and recreational trails, with connections to the Bay Area Ridge Trail, San Francisco Bay Trail, Guadalupe River Trail, and Coyote Creek Trail.
- e. Work with qualified organizations and entities, including, but not limited to, the California Conservation Corps, the San Jose Conservation Corps, AmeriCorps, and others to maintain facilities in open space preserves including, but not limited to, cultural and historic structures, bridges, roads, and other infrastructure.
- f. Prevent pollution and vandalism of open space, water resources, and wildlife habitat.

4. Urban Open Space, Parks, and Environmental Education Program

The purpose of this Grant Program is to assist municipalities, schools, and applicable nonprofit organizations with projects within the cities of Milpitas, Santa Clara, San Jose, Campbell, Morgan Hill, and urban County areas to create healthy and safe open space and park areas for their communities by creating or improving parks, preserving open space, and maintaining or creating trails; enhancing and restoring habitat, natural resources, and water resources; and enhancing access to healthy food through urban farms and gardens.

No more than 25 percent of the revenues generated by this funding measure will be made available for this grant program. The Urban Grant Program would provide grants to cities, the County, schools, and nonprofit organizations on a competitive basis according to the Urban Open Space Project Criteria listed below. Funds shall be available through an annual grant allocation process designed by the Santa Clara Valley Open Space Authority, in coordination with cities, the County, schools, and non-profit organizations within the boundaries of the Authority. Grant allocations shall reward a diversity of projects, with the goal of achieving a reasonable geographic distribution across the Santa Clara Valley Open Space Authority's jurisdiction. The grant allocation process and the individual projects shall be subject to approval by the Authority's Governing Board of Directors ("Board").

Urban Open Space Project Criteria:

- a. Protect and enhance open space and wildlife habitat, creeks and streams, and develop land for nature-based parks, open space preserves, trails, and greenbelts in urban areas.
- b. Create, develop, and implement pedestrian and bicycle trail connections to connect urban communities to local and regional parks, open space preserves, creeks and flood control channels, to improve public health (e.g., San Francisco Bay Trail, Bay Area Ridge Trail, Coyote Creek, Guadalupe River, Silver Creek, Thompson Creek, Penitencia Creek, Three Creeks Trail, Five Wounds Trail).
- c. Implement urban tree planting and tree protection/maintenance.
- d. Create and expand urban farms and community gardens to support public health and local agriculture.
- e. Expand nature and science-based environmental education programs and youth engagement projects.

EXAMPLES OF PROJECTS THAT COULD POTENTIALLY BE FUNDED BY THE MEASURE INCLUDE BUT ARE NOT LIMITED TO:

1. Alviso Adobe and Higuera Adobe Parks: Establish Alviso Adobe as a historical museum, and refurbish the historic Caretaker’s Cottage in Higuera Adobe Park in collaboration with the City of Milpitas
2. Calera Creek Connection: Partner with City of Milpitas to connect the Bay Area Ridge Trail to the Higuera Adobe via a proposed Calera Creek Trail
3. San Francisco Bay Trail: Increase public access by closing gaps in Bay Trail walking and biking trail connections
4. Bay Area Ridge Trail: Increase public access by closing gaps in the Bay Area Ridge Trail
5. San Francisco Bay Area Water Trail: Provide Water Trail public access amenities at Alviso Marina
6. Ulistac Natural Area: Increase educational programming and restore natural habitat
7. Sierra Vista Open Space Preserve: Expand trail system and connections to regional trails, restore ponds and wildlife habitats for endangered species
8. BART/Penitencia Creek Trail Connection: Complete trail linking Berryessa BART station via Penitencia Creek to Alum Rock Park and Sierra Vista Open Space Preserve
9. Guadalupe River Nature Center and Environmental Programming: Partner with nonprofits to establish outdoor environmental education learning center and expand interpretive programming for youth and families
10. Five Wounds Trail: Acquire right of way to develop new trails connecting Coyote Creek Trail to Berryessa BART station in coordination with City of San Jose, County Parks, and Valley Transportation Authority
11. Coyote Creek Trail: Expand walking and biking trail connections and restore natural habitats, including connections to Coyote Valley
12. Silver Creek Trail: Increase walking and biking opportunities by creating connections to regional trails, parks, and transit
13. Three Creeks Trail: Complete eastern trail alignment
14. San Tomas Aquino/Saratoga Creek Trail: Construct walking and biking trails through cities of Campbell and Santa Clara
15. Thompson Creek Trail Improvements: Complete walking and biking trail improvements
16. Guadalupe River Trail: Expand walking and biking trail connections and trail amenities
17. Martial Cottle Park: Partner with County Parks to enhance trail connections to Blossom Hill Light Rail Station and implement recreation, farm demonstration, and wetland restoration projects
18. Santa Teresa Foothills: Partner with City of San Jose, County, and Santa Teresa Foothills Neighborhood Association to protect land and develop regional ridgeline trail connection to local and regional parks and open space
19. Coyote Ridge Open Space Preserve: Open new public trailhead and parking area with connections to Bay Area Ridge Trail, regional trails, and protect and restore additional open space and habitat for endangered species
20. Coyote Valley Open Space Preserve: Build trail accessible to seniors and people with disabilities, expand protected areas and trail system, and restore and enhance wetland and endangered species habitat
21. North Coyote Valley Conservation Area: Expand protected areas and create a regionally significant preserve system that includes wildlife movement corridors, enhanced floodplains, restored

- wetlands and habitats, public trails and nature-based recreational amenities, environmental education programs, and agritourism.
22. Youth Agricultural Education and Demonstration Farm: Partner with cities, schools, nonprofits, and agricultural organizations to establish an agricultural education and demonstration farm in the Coyote Valley Greenbelt
 23. Rancho Cañada del Oro Open Space Preserve: Restore wildlife habitat, expand educational opportunities, and construct new public access amenities and trail connection to Blair Ranch
 24. El Toro Peak: Partner with City of Morgan Hill to establish an open space preserve with staging area and trails, and restore natural habitat
 25. Southern Santa Cruz Mountains: Establish regional trail connections between Uvas Reservoir, Uvas County Park, and Rancho Cañada del Oro Open Space Preserve, develop new staging area, protect wildlife corridor, and manage wildland-urban interface for fire safety
 26. Palassou Ridge: Establish open space preserve, restore historic stone house as a visitor amenity, develop multi-use trails connecting to Henry Coe State Park, implement wildfire prevention, and habitat restoration projects
 27. Diablo Foothills: Enhance public access with new staging area and trails, restore grasslands, wetlands, and wildlife habitat
 28. Sargent Hills: Protect wildlife corridor, create staging area, public access and regional trail connections to the Bay Area Ridge Trail
 29. South County Agriculture: Conserve working farms and ranches near Morgan Hill, San Martin, and Pajaro River for greenbelts and agricultural viability and to enhance flood control, water quality, wildlife habitat, and connectivity
 30. Youth Conservation Internship Program: Establish new internship program for youth from underserved communities to develop conservation and career skills
 31. Backcountry Camping: Build new backcountry camping sites, increase access for underserved youth by partnering with community-based nonprofits
 32. Work with Cities, County, parks, and transportation agencies on the feasibility of equitable and sustainable transportation alternatives to connect people to parks, open space, and trails

C. Administrative Provisions and Fiscal Safeguards

1. Citizen Oversight and Independent Financial Audits

In order to ensure accountability, transparency, and public oversight of all funds collected and allocated under this Measure and to comply with state law, all of the following shall apply:

- a. On or before January 1 of each fiscal year, the Authority's chief fiscal officer shall file an annual report with the Board that explains (1) the amount of funds collected and expended under this Measure and (2) the status of the projects authorized to be funded by this revenue in compliance with Government Code Sections 50075.1(d), 50075.3.
- b. The Independent Oversight Committee created in 2015 to review the expenditures of all parcel tax revenues collected under Measure Q shall continue to review the expenditures of all parcel tax revenues collected under this Measure. The resolution the Board adopted on April 23, 2015 to govern the terms, composition, and specific duties of the Oversight

Committee shall continue to govern the Oversight Committee, unless amended, and any such amendments shall be consistent with the “Citizen Oversight and Independent Financial Audits” provisions set forth in this Part C(1). The Oversight Committee will consist of seven at-large members. In making appointments to the Oversight Committee, the Board will seek to reflect the demographic diversity of its jurisdiction.

- c. Members of the Oversight Committee shall be appointed by the Board and shall be residents within the Santa Clara Valley Open Space Authority’s jurisdiction who are neither elected officials of any government, nor employees from any agency or organization that directly benefits financially from the proceeds of the parcel tax.
- d. Oversight Committee meetings will be announced in advance and will be open to the public. The Oversight Committee shall meet at least once but no more than four times per year.

The responsibilities of this Committee include:

- Reviewing Plan expenditures on an annual basis to ensure they conform to the Plan.
 - Reviewing the annual financial audit and report prepared by an independent financial auditor and submitting its recommendations and oversight report thereon.
- e. All actions, including decisions about selecting projects for funding, will be made by the Board in public meetings in compliance with the Brown Act.
 - f. To the extent allowable by law, all residential and non-residential parcels will be uniformly taxed.
 - g. The revenue raised by the Measure for the purposes described in this Plan will be administered by the Santa Clara Valley Open Space Authority. All funds shall be placed in a separate account to hold all funds collected pursuant to the Measure.

2. Additional Allocation Criteria and Community Benefits

The Authority shall ensure that the revenue generated by the Measure is spent in an efficient and effective manner, consistent with serving the public interest and in accordance with existing law and this Plan.

- a. The Authority shall make all final decisions regarding implementation of the Plan and funding for any specific project. The Board shall give priority to projects within its jurisdiction that meet multiple objectives of the *Santa Clara Valley Greenprint*, including one or more of the following objectives:

-
- i. Have a significant positive effect on the health of land, water, and wildlife habitat, safety, and quality of life for residents within the Authority's jurisdiction.
 - ii. Provide for geographic distribution of projects across the Authority's jurisdiction.
 - iii. Increase impact by leveraging state and federal resources as well as public/private partnerships.
 - iv. Strengthen connections between communities and open space through regionally-significant trails and transit access.
 - v. Benefit the economy, sustainability, and climate resiliency of the region by investing in nature-based infrastructure and local workforce development.
 - vi. Engage youth and young adults in local workforce development and assist them in gaining skills and experience related to protection and stewardship of the natural environment, wildlife, water resources, and agricultural lands.
- b. The Board shall conduct one or more public meetings annually to gain public input on selection of project grants to expend revenues generated by the Measure.
 - c. The Santa Clara Valley Open Space Authority may accumulate revenue over multiple years so that sufficient funding is available for larger and long-term projects. All interest income shall be used for the purposes identified in this Plan.
 - d. Revenue generated by this measure and provided to the Santa Clara Valley Open Space Authority may also be used for such administrative expenses as the Board determines are reasonable and necessary through its annual budget process or other appropriate mechanism.
 - e. Costs of performing or contracting for project-related work shall be paid from the revenues of the measure and allocated to the appropriate purpose and project.
 - f. An annual independent financial audit shall be conducted.
 - g. To the extent permitted by law, up to one-tenth of one percent (0.1 %) of the gross proceeds of the parcel tax shall be made available for the Oversight Committee's activities.
 - h. Parcel tax proceeds are intended to augment annual support for the Authority and do not substitute for individual city or County obligations. Monies from this program may not go to a city's or the County's "General Fund."
